

Anomaly detection & Cloud



Industrial IoT Gateway – Anomaly Detection



Edge to Cloud – Asset Tracking



Sensor to Cloud – Cold Chain Demo

Asset tracking

Connect from the Edge to AWS cloud

Sustainable cold chain: Transportation of temperature-sensitive products

Ultra-Low Power, Secure Cloud Connected Asset Tracker solution using STM32U5

STM32U5 Microcontrollers

The new reference for secure and smart IoT applications



Higher Security

Certified PSA L3 and SESIP L3

Lower Power

58 ULPMark-CM

Richer applications

Cortex-M33 @ 160MHz, extended features set

STM32U5 IoT Kit

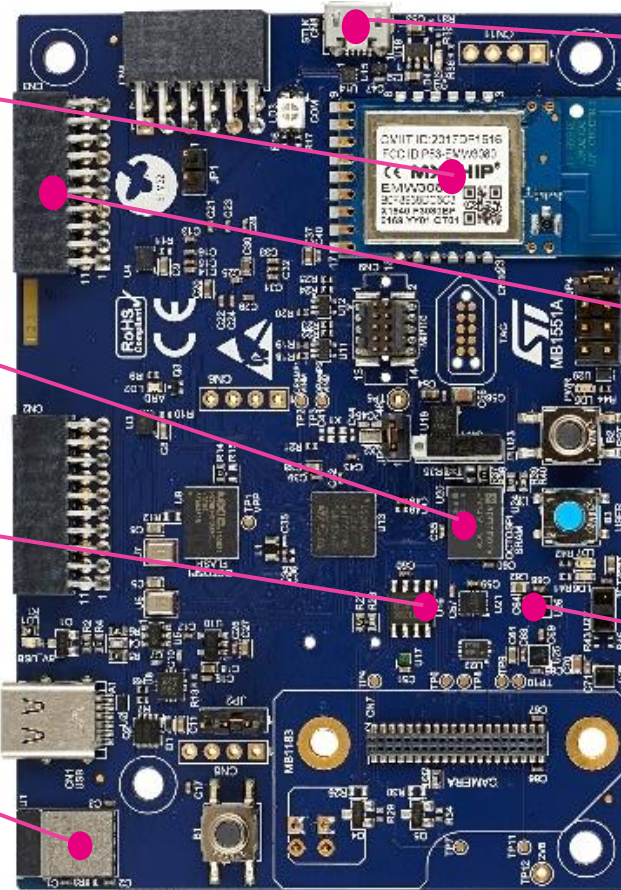
Your reference board for IoT Proof-of-Concept

Wi-Fi Module

STM32U5 MCU

STSAFE
Secure Element

BLE module



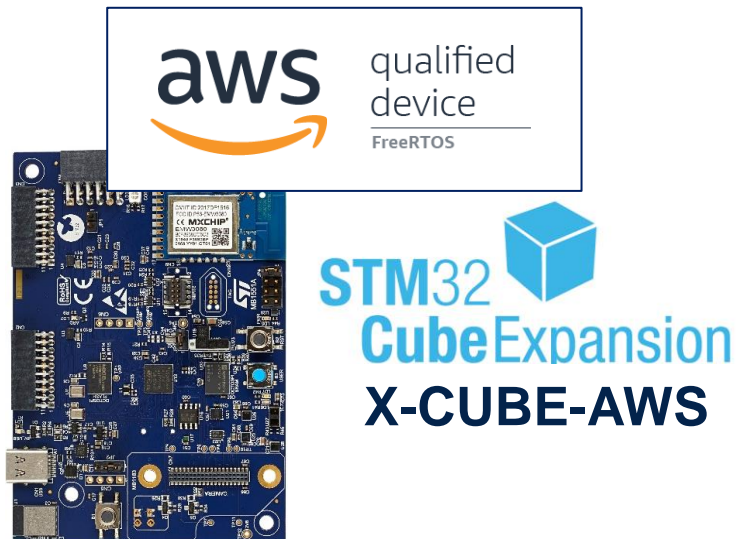
Programming and Debug

Extension connectors
Arduino (backside), PMOD,
STMOD+

Sensors
Accelerometer, Magnetometer,
Pressure, Humidity, ToF,
Temperature

AWS IoT on STM32U5

X-CUBE-AWS reference integration simplifying your development



AWS-Qualified FreeRTOS reference integration

Leveraging ARM Trusted Firmware-M (TF-M)

Based on FreeRTOS open source Middleware

Supporting WIFI connectivity

AWS IoT on STM32U5

Reference implementation supporting AWS IoT Services



AWS IoT Core

AWS IoT Device management

AWS IoT Device Defender

AWS IoT analytics



Industrial IoT Anomaly Detection

End-to-End IoT Solution with AI/ML Anomaly Detection

AWS qualified STM32MP1 gateway

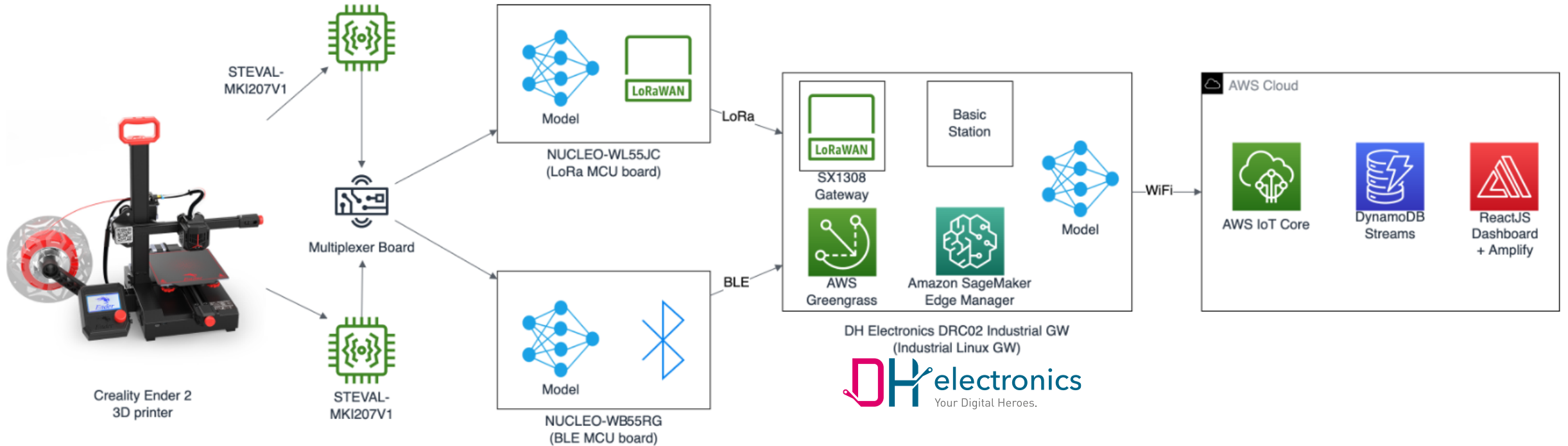
Full System Integration from ST Partners

Connectivity with STM32WB and STM32WL

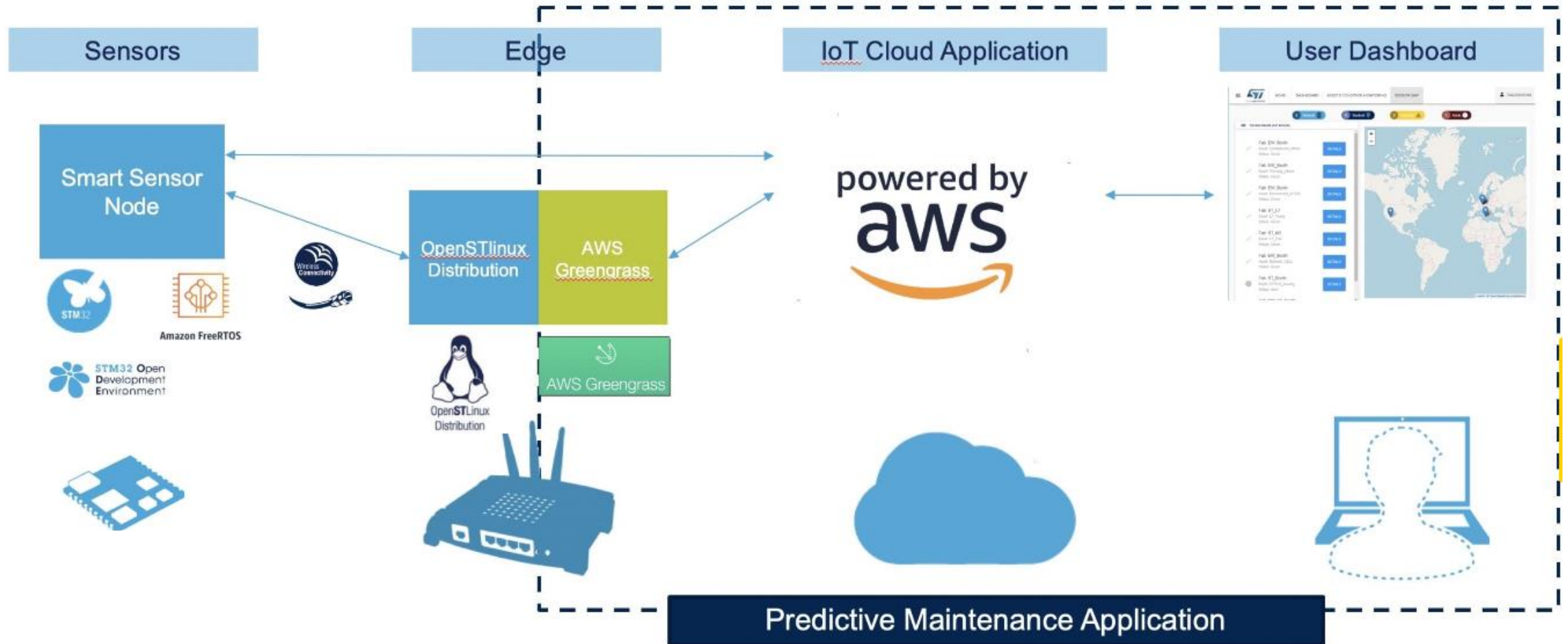


Industrial IoT Gateway for Anomaly Detection

System Integration from ST Partner Klika Tech



Quick Start for Condition Monitoring and Predictive Maintenance



Getting Started with STM32 MPU – IoT Gateway



Getting Started Guide DRC02
Greengrass-v2.pdf

https://github.com/stm32-hotspot/DRC02_IIoT_GreenGrass_Gateway/blob/main/Getting%20Started%20Guide%20DRC02%20Greengrass-v2.pdf



DRC02 STM32MP1 IoT Gateway

<https://devices.amazonaws.com/detail/a3G8a00000EtBILEA3/DRC02-STM32MP1-IoT-Gateway>



IoT Gateway DRC02

<https://www.dh-electronics.com/en/embedded-products/dhcon/detail/iot-gateway-drc02>

