

The background features a blurred industrial scene with a prominent blue circular graphic on the left side. In the center, a vertical metal component, possibly a spindle or tool holder, is visible, showing a series of horizontal grooves. The overall color palette is dominated by dark blues and oranges.

Realtime High performance PLC solution based on STM32MP135

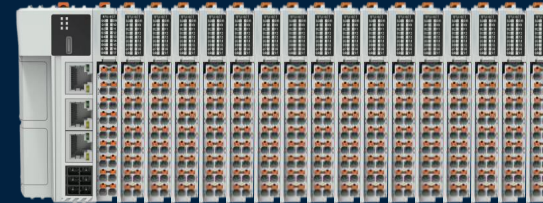
| Nxtrol Technology

NXTROL

Introduction



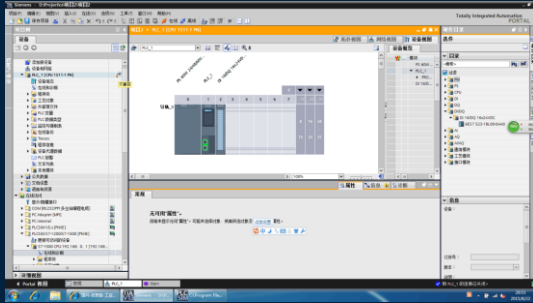
Henry Bao, Nxtrol technology Co-founder and General Manager, who served as the technical leader of the China branch of a well-known German IEC61131-3 PLC software solution company from 2010 to 2019. Specialized in IEC61131-3 standard PLC-related software and hardware technologies, with nearly 15 years of technical expertise in PLC core platform technology, as well as fieldbus, communication protocols, motion control, and other related technologies.



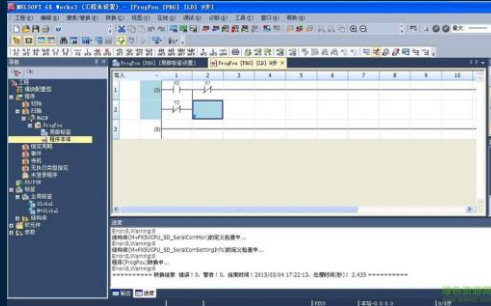
**Specialized in PLC
software and hardware
technology solutions**

PLC market and Technological system(2023)

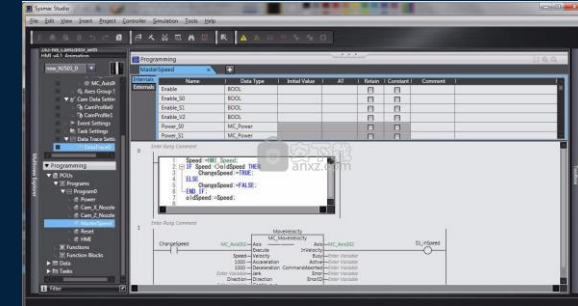
Siemens(40%)



Mitsubishi(12.9%)



Omron(11.2%)

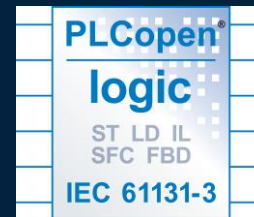


Language

LD, FBD, ST, SFC, IL(*)

Datatype

Basic/Advance/C
ustom datatype



Task

Realtime task
architecture

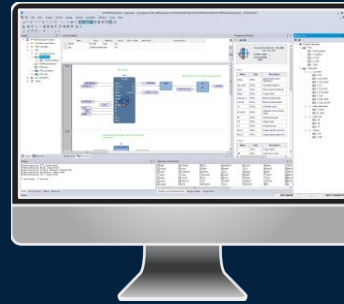
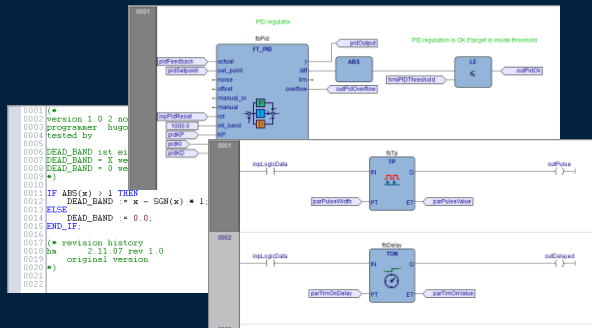
POU

Re-encapsulable FC
(Function) / FB
(Function Block) and
PROG (Program)

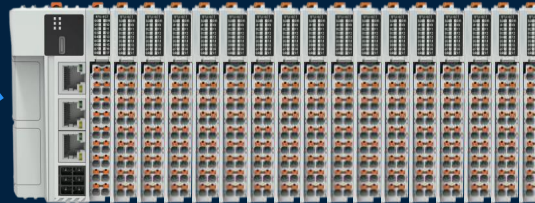
Programmable Logic Controller

IEC61131-3 PLC Engineer

Logic Program



PLC Controller



HMI Communication



On-site sensors and actuators



Key points of new model high performance PLC from Market

- 1** Integration - Integrating more debugging tools to lower the application threshold.
- 2** High speed and more axis - 12 Axis:125us/128 Axis: less than 1ms
- 3** Low interrupt latency - 5us
- 4** High performance - around 27 times than traditional PLC
- 5** High Capacity - Approximately 2-100 times that of traditional models.

ARM Cortex-A Quad Core



Select best platform combination

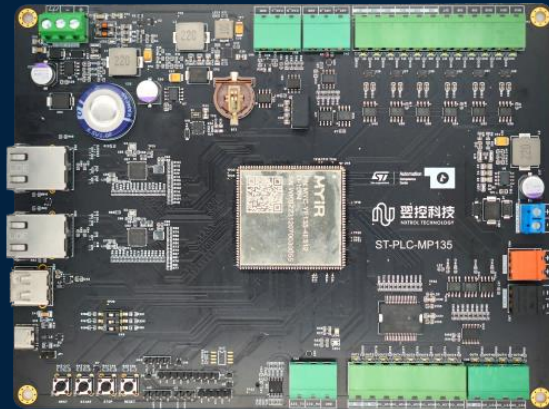


Reference Design based on STM32MP135



Open Cooperation

Full functionality reference design



MPU & Reference Board



SOM module



Software Technology

Product solution based on STM32MP135



Open Cooperation

Performance & Cost Balanced



MPU



PLC Hardware



Local & Remote IO



Housing & Connector



Software Technology

LogicLab solution based on STM32MP135



1GHz & 4ns/IL

Latency

<15us



250us-4ms cycle
<1us sync diff



64 Axis



32 IO(2ms)



100% opensource and free RTOS - ThreadX



12 Billion devices



MIT License

Eclipse ThreadX System Components

ThreadX	High-performance real-time operating system (SIL 4, ASIL D, Med. Class C)	NetX Duo	IPv4/IPv6 stack with IPsec and TLS/DTLS support (SIL 4, ASIL C, Med. Class C, IEC 61508, IEC 61511)
FileX	Embedded FAT filesystem with optional fault tolerance	GUIX	Design environment and runtime for 2D user interfaces (SIL 4, ASIL D, Med. Class C)
USBX	USB Stack providing host, device and on-the-go support (SIL 4, ASIL D, Med. Class C)	TraceX	Graphical view of real-time events enabling analysis of system-level behavior

COPYRIGHT (C) 2024, ECLIPSE FOUNDATION. THIS WORK IS LICENSED UNDER A CREATIVE COMMONS ATTRIBUTION 4.0 INTERNATIONAL LICENSE. (CC BY 4.0)

ECLIPSE FOUNDATION

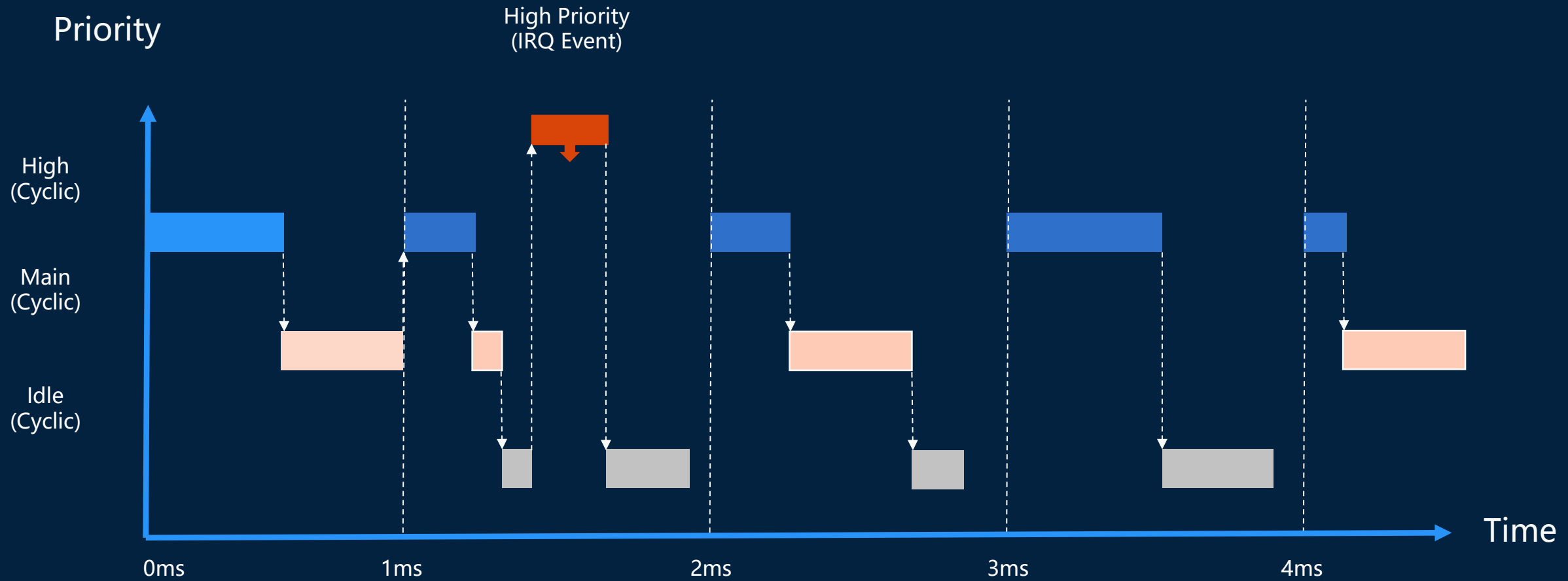


Business Component



Microsoft Maintenance

WHY RTOS?



PLC program execution

NXTROL

LogicLab IDE feature

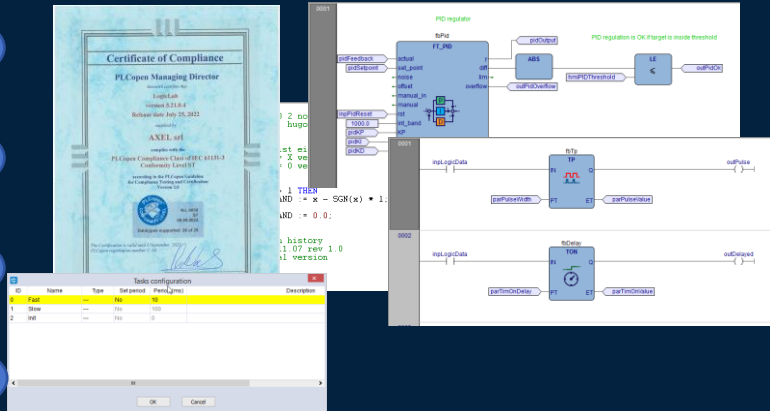
IEC61131-3 Standard

Certified

Realtime Task

Object Orient

OEM Brandlabel



FBD,LD,
ST,SFC,IL

datatype

Programming
in Chinese

UI
Development

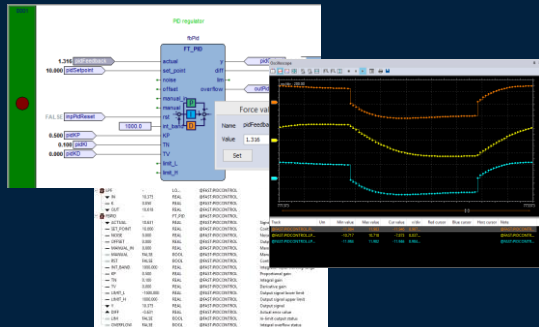
Lightweight and high-performance

- Full feature installation < 200MB
- Machine code execution, more than 10 times faster than traditional PLC
- Fast compiling and debugging
- Low resource requirement, support IEC61131-3 on resource constrain MCU

Logic debug and online

Breakpoint

online monitor



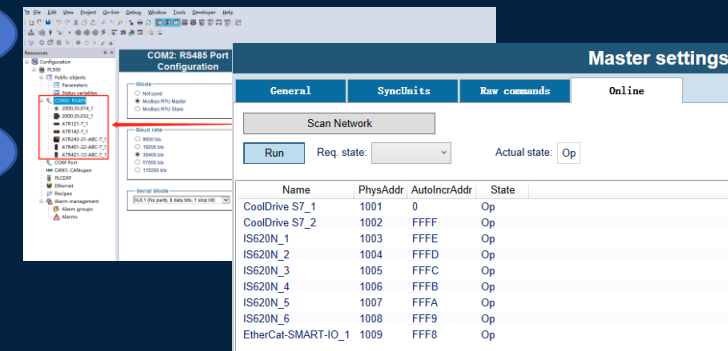
Oscilloscope

Overwrite

Modbus

Motion

Configurator and Diagnosis



CANopen

EtherCAT

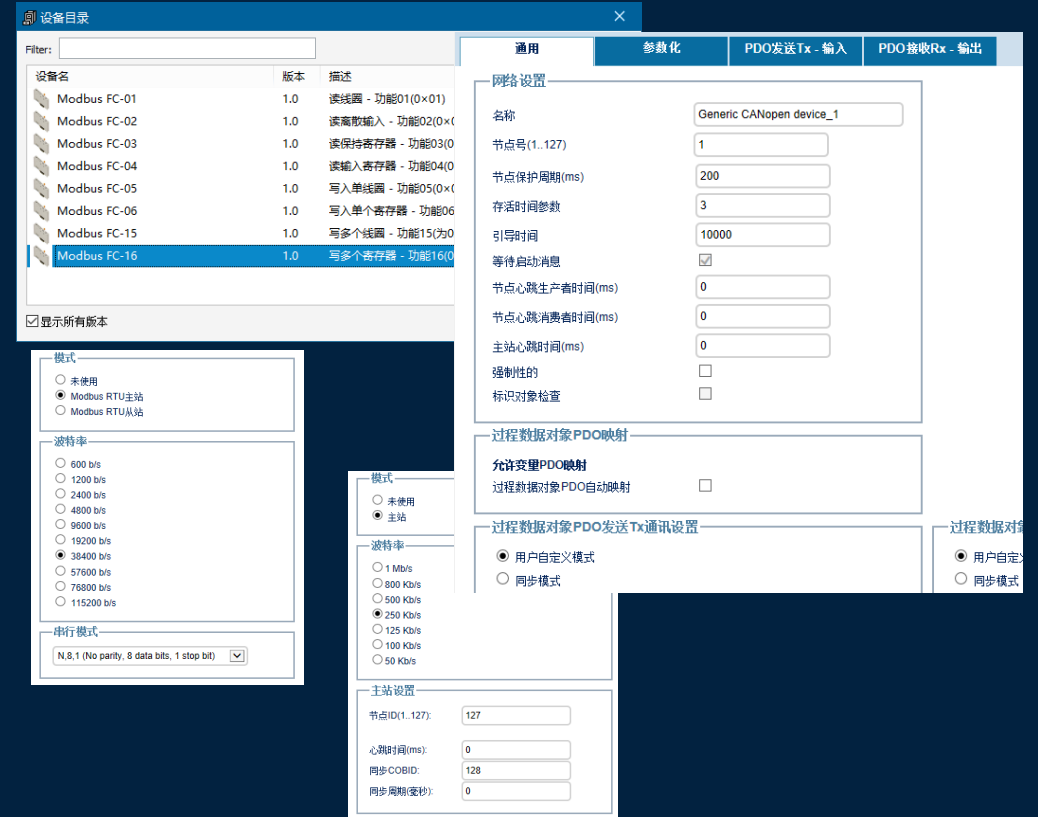
High performance Modbus&CANopen protocol

Modbus

- Modbus function code
- ModbusRTU&TCP Client and server
- UI network configuration
- Modbus function blocks
- Diagnosis datablocks

CANopen

- Support DS301、DS302、DS402 standard
- Support import EDS
- UI Network configuration
- SDO and management Function Block
- Diagnosis datablocks



High performance EtherCAT master

Core feature

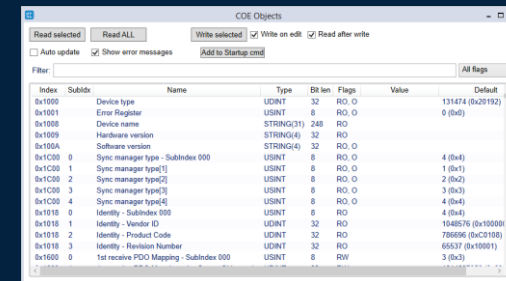
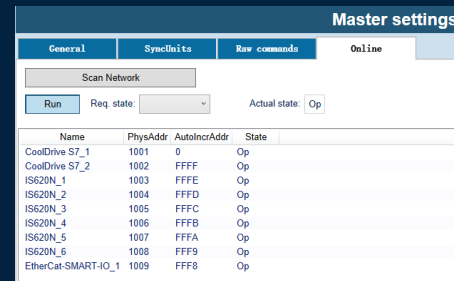
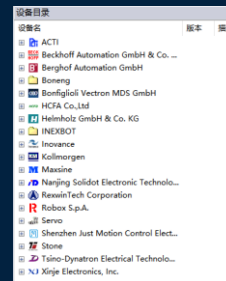
- CoE, FoE, EoE
- Online Configuration and Diagnosis
- Support standard ESI and ENI
- Support DC correction
- 125us-4ms EtherCAT cycle time

Configuration

- Import ESI and generate standard ENI
- Online scan and parameter setting
- Init commands and PDO configuration
- Online read and write EtherCAT ESC register, PDO, COE object
- Online monitor slaves status
- No slaves limitation, free of charge

Development

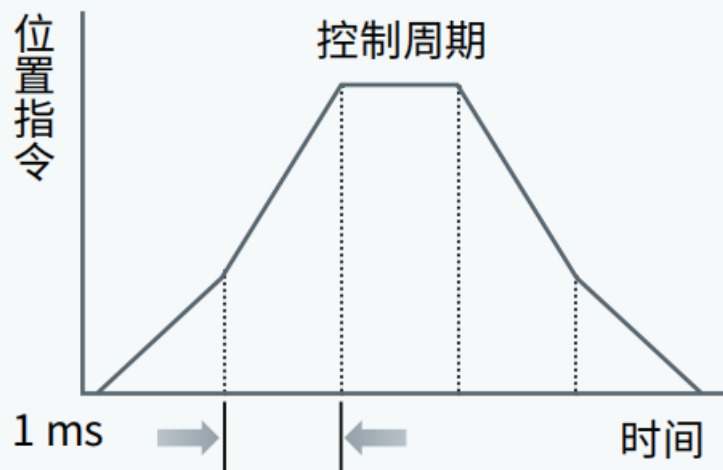
- PDO mapping
- SDO read and write
- Master and slave monitor
- Support PLC and C/C++ API



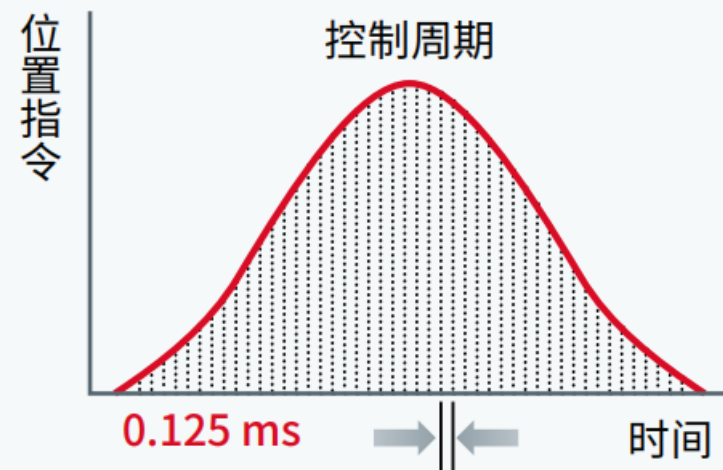
Advantage of High performance EtherCAT

►【高精度】位置指令的精度比较

控制周期为 1 ms 时



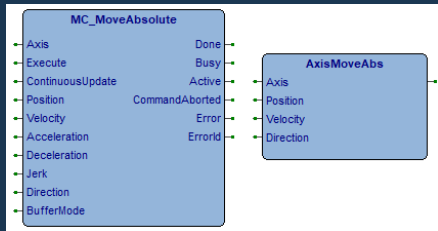
控制周期为 125 μ s 时



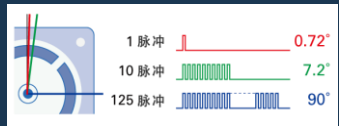
Motion Control solution



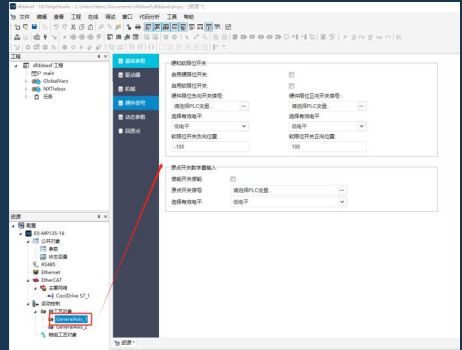
Duo Instruction (PLCopen & Base)



Drive Interface (Virtual, Pulse, EtherCAT)

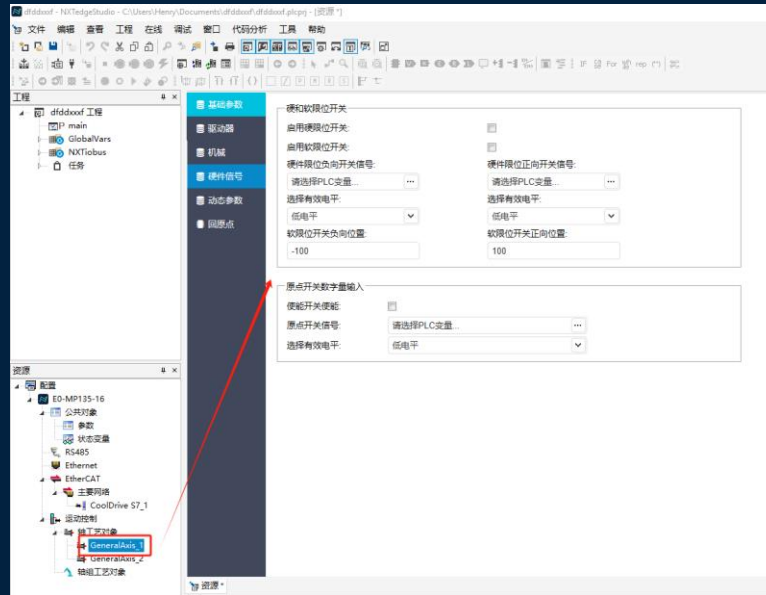


Configuration and Diag

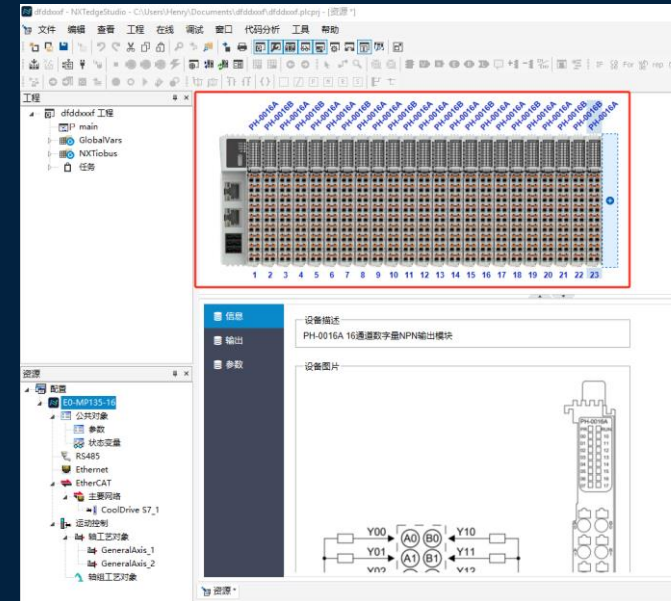


所有轴参数配置均通过界面配置完成

Extend LoigcLab IDE through SDK

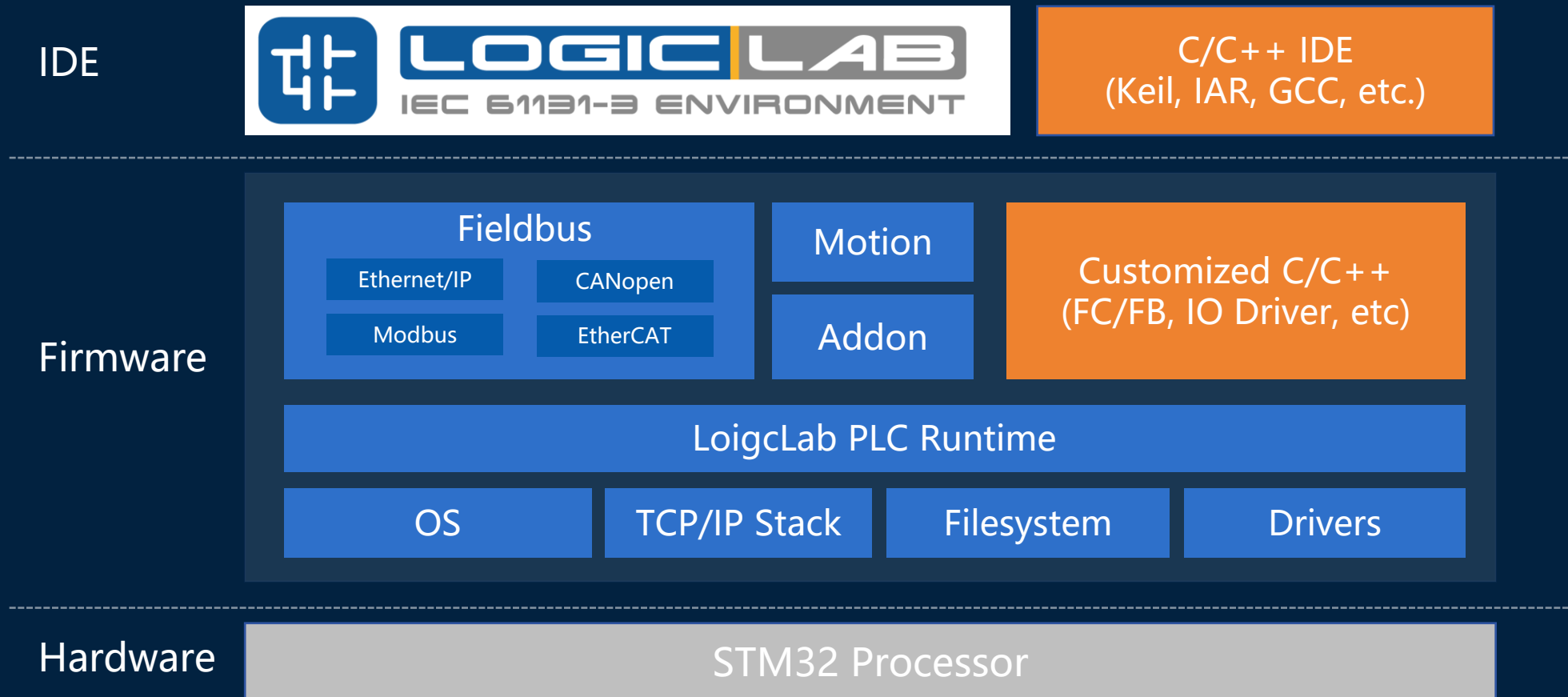


Axis Configuration and Diagnosis



IO Bus Configuration and Diagnosis

One-stop software solution for core technologies of PLC



STM32MP257 + RTOS + LogicLab(Future)

- 1 High performance - High CPU frequency and multi core optimization
- 2 Realtime enhancement - DDR4 high performance RAM
- 3 High performance network - TSN switch support high performance communication
- 4 PCI-E interface - Possible to replace traditional Motion Control Card



Middle and large scale PLC



Display and PLC integrated controller



Motion Control Card

Q&A

Thanks for your attention!

