

## Bill of materials – VL53L3CX-SATEL

VL53L3CX-SATEL Satellite Board without regulator to be used in conjunction with X-NUCLEO-53L3A2

Item	Qty	P/N	Title	Detail	Reference	Vendor	Vendor P/N
1	1	PCB1540B	Photonics Stack Satellite Board				
2	1	VL53L3	VL53L3 Photonic Module	LGA12 4.4X2.4X1mm	J2		
3	1	C1012-104	Ceramic Capacitor 0402, +-10%	100nF X7R 16V	C5	Farnell	881-9742
4	1	C1012-475	Ceramic Capacitor 0402, +-10%	4.7uF	C6	Farnell	234-6876
5	7	R1010-000	Resistor 0402, 1%	Zero Ohm	R15, R16, R17, R18, R19, R20, R21	RS Components	667-8520
6	8	R1001-000	Resistor 0603 1/16W 1%	0R	R7, R8, R9, R10, R11, R12, R13, R14	Farnell	933-1662
7	3	R1010-102	Resistor 0402, 1%	1kOhm	R2, R3, R4	Farnell	923-9235
8	1	CON1008-010	Double Row PCB 0.1 inch header	2x5	J1 (Snip Pins 7 & 8)	Farnell	973-3680
9	1	Label			3mm wide label with "10B" in Arial 6pt. Affixed as shown in Appendix 9		
		NOT FITTED	NOT FITTED		C1, C2, C3, C4, R1, R5, R6, TP17, U1, U2		



Figure 1: VL53L3CX-SATEL (blue board)

## Bill of materials – VL53L3CX-SATEL

A green version of the SATEL can be found too. Those ones have regulators. ‘Green’ satellites cannot be used in conjunction with X-NUCLEO-53L3A2

VL53L3CX-SATEL Satellite Board with regulator

Item	Qty	P/N	Title	Detail	Reference	Vendor	Vendor P/N
1	1	PCB1540B	Photonics Stack Satellite Board				
2	1	IC1432	TXS0108E 8-bit Bidirectional Lvl Translator	TSSOP20	U1	RS Components	709-4639
3	1	IC1542-2V8	Torex XC6222B281MR-G LDO Regulator	2v8; SOT25; 700mA	U2	DigiKey	893-1141-1-ND
4	1	VL53L3	VL53L3 Photonic Module	LGA12 4.4X2.4X1mm	J2		
5	1	C1012-104	Ceramic Capacitor 0402, +-10%	100nF X7R 16V	C5	Farnell	881-9742
6	2	C1001-104	Ceramic Capacitor 0603, X5V, 6.3v	100nF	C3, C4	Farnell	882-0023
7	1	C1001-105	Ceramic Capacitor 0603, X5V, 6.3v	1uF	C2	RS Components	496-2801
8	1	C1012-475	Ceramic Capacitor 0402, +-10%	4.7uF	C6	Farnell	234-6876
9	1	C1001-106	Ceramic Capacitor 0603, X5V, 6.3v	10 uF	C1	Farnell	145-8902
10	8	R1001-000	Resistor 0603 1/16W 1%	0R	R7, R8, R9, R10, R11, R12, R13, R14	Farnell	933-1662
11	3	R1010-102	Resistor 0402, 1%	1kOhm	R2, R3, R4	Farnell	923-9235
12	1	CON1008-010	Double Row PCB 0.1 inch header	2x5	J1 (Snip Pins 7 & 8)	Farnell	973-3680
13	1	Label					3mm wide lable with "11B" in Arial 6pt. Affixed as shown in Appendix 9
		NOT FITTED	NOT FITTED				R1, R5, R6, R15, R16, R17, R18, R19, R20, R21, TP17

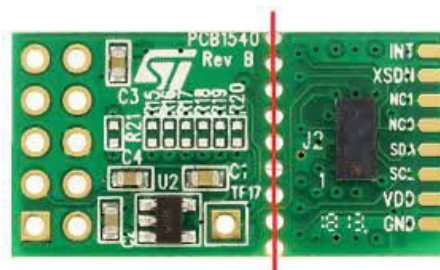


Figure 2: VL53L3CX-SATEL (green board)