

WARNING!
When closed, maximum supply voltage is limited at 15 V



Board Title EVLSPIN32G0A2_R1

Sheet Title STSPIN32G0A2 Controller

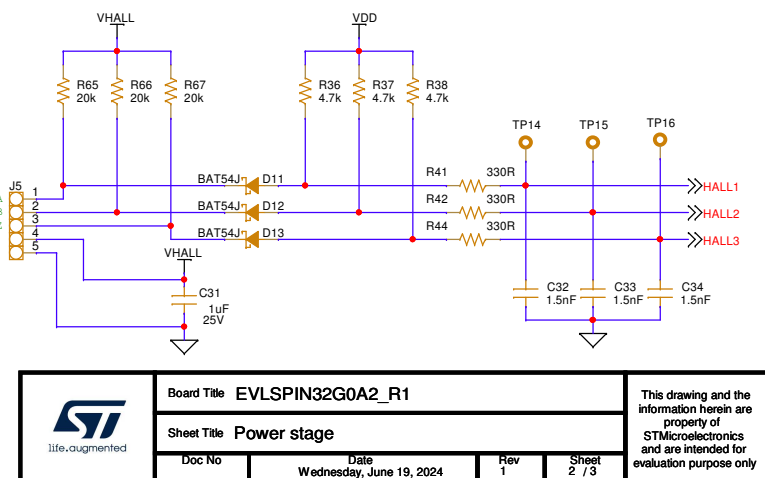
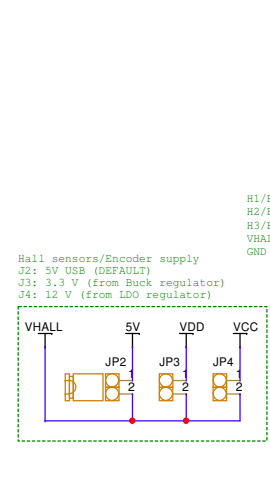
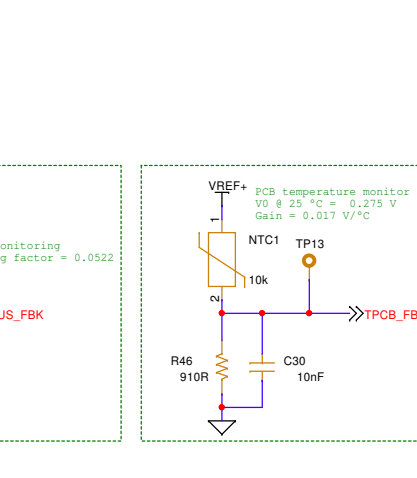
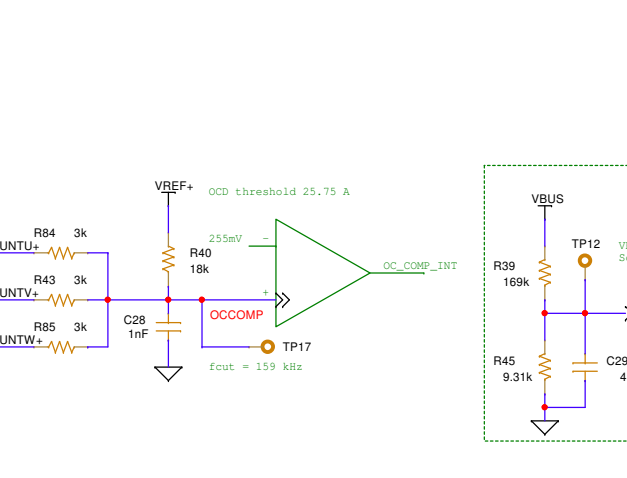
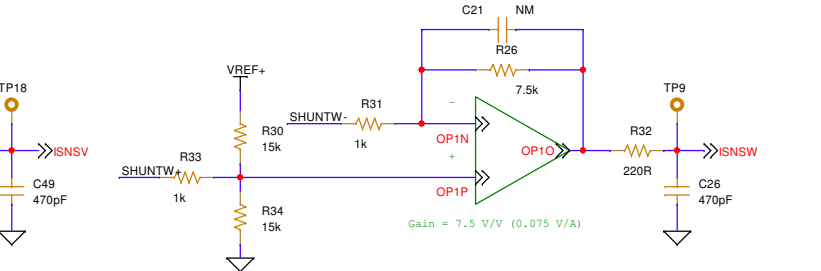
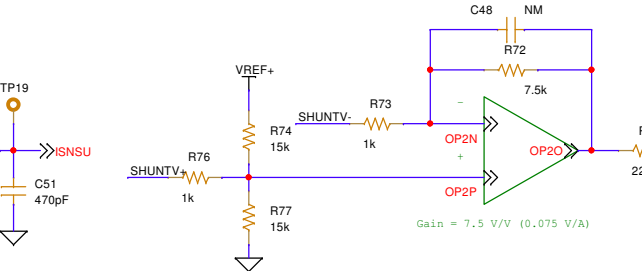
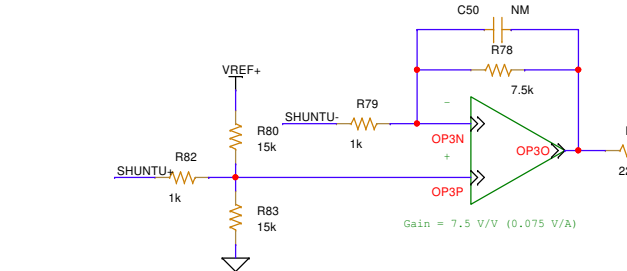
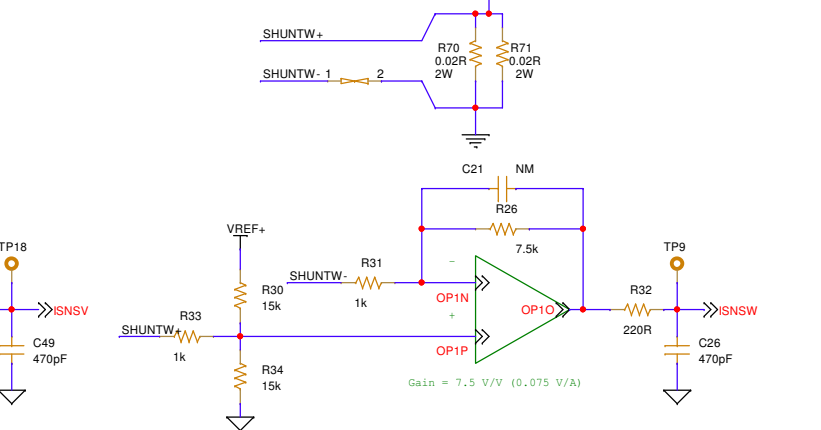
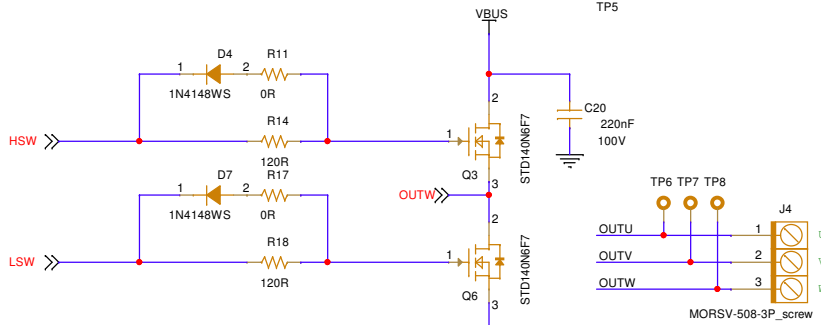
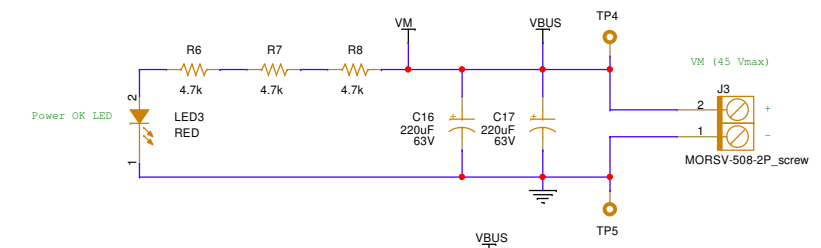
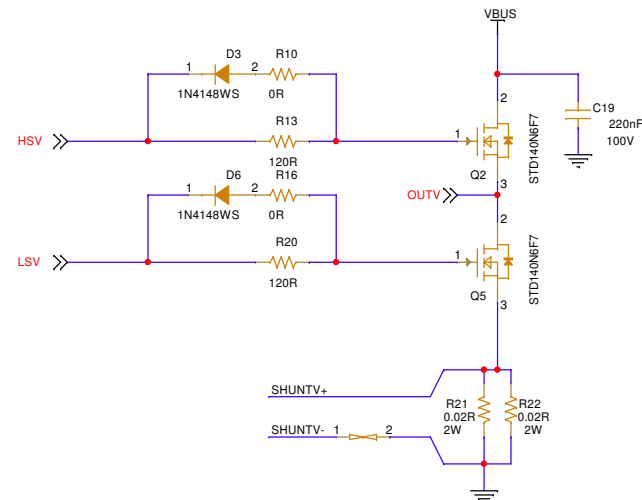
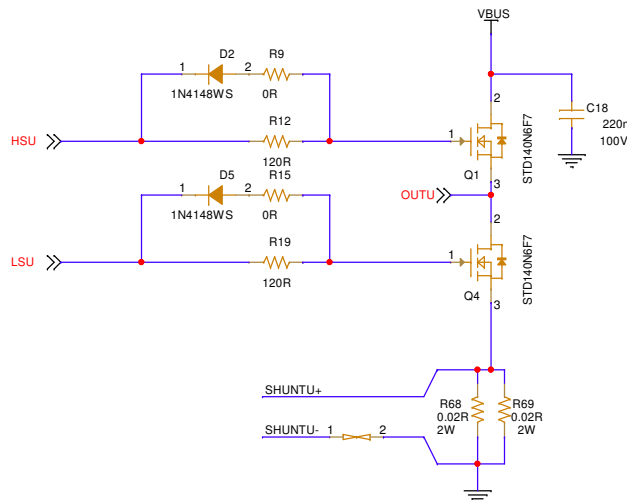
Doc No

Date
Wednesday, June 19, 2024

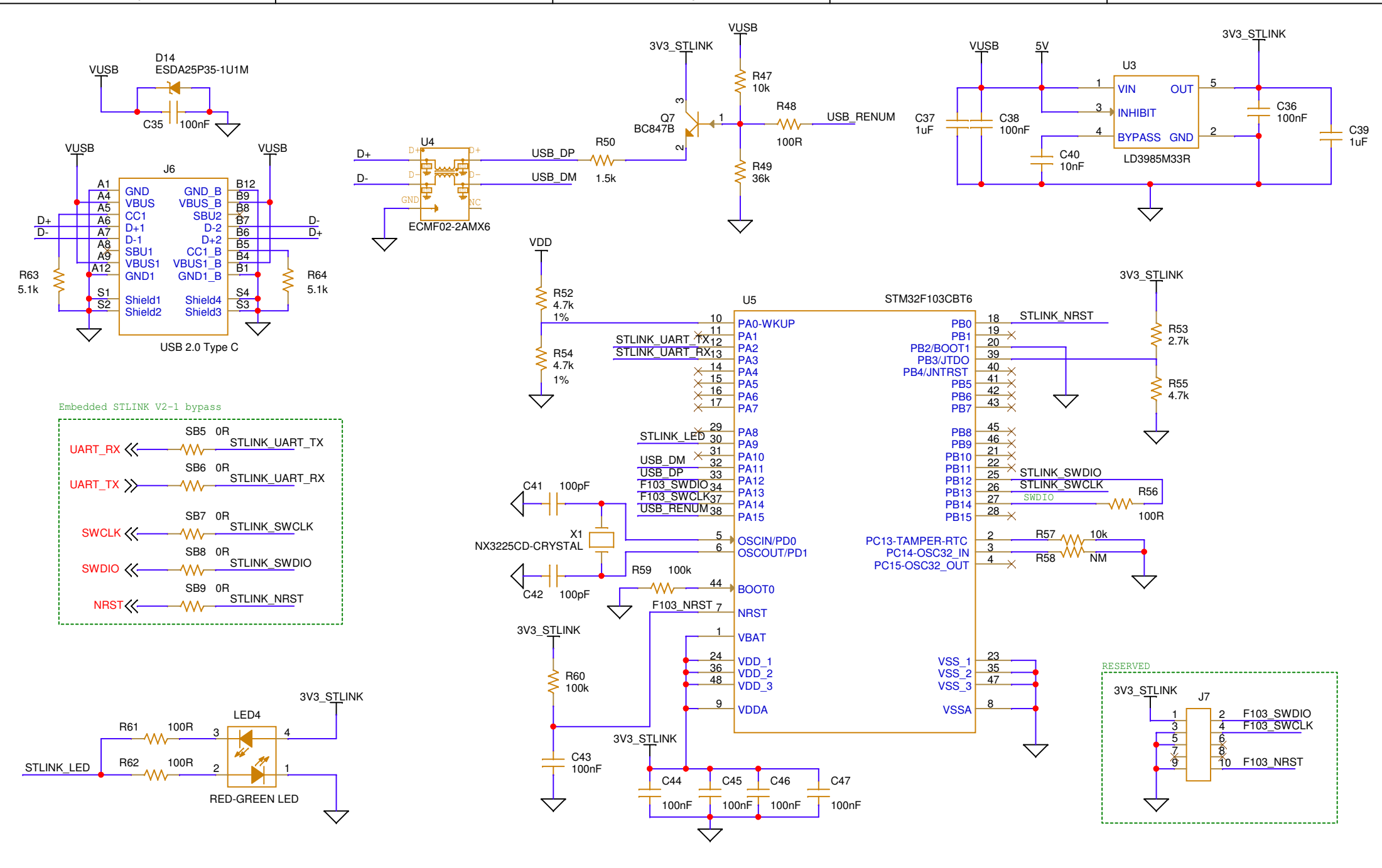
Rev
1


Sheet
1 / 3

This drawing and the information herein are property of STMicroelectronics and are intended for evaluation purpose only



| | | | | | |
|--------------------------------|--|--------------------------------------|--|---|--|
| | | Board Title EVLSPIN32G0A2_R1 | | This drawing and the information herein are property of STMicroelectronics and are intended for evaluation purpose only | |
| Sheet Title Power stage | | Date Wednesday, June 19, 2024 | | Rev 1 | |
| Doc No | | Rev 1 | | Sheet 2 / 3 | |



| | | | | |
|---|-------------------------------------|----------|----------------|---|
|  life.augmented | Board Title EVLSPIN32G0A2_R1 | | | This drawing and the information herein are property of STMicroelectronics and are intended for evaluation purpose only |
| | Sheet Title STLINK | | | |
| Doc No | Date Wednesday, June 19, 2024 | Rev 1 | Sheet 3 / 3 | |