

# STM32U5G9ZJT6Q Discovery

---

MB1918

---

## Table of contents

---

Sheet 1: Project overview (this page)
Sheet 2: MB11918 TOP
Sheet 3: MCU System
Sheet 4: MCU Interfaces
Sheet 5: MCU Power
Sheet 6: Board Power
Sheet 7: Display
Sheet 8: USB Type C
Sheet 9: User Interface
Sheet 10: Octo SPI Flash Memory
Sheet 11: Arduino UNO Rev3 Connectors
Sheet 12: STLINK V3EC
Sheet 13: External Debug Connectors

## Legend

---

General comment such as function title, configuration, ...

Text to be added to silkscreen.

Warning text.

## Open Platform License Agreement

---

The Open Platform License Agreement (“Agreement”) is a binding legal contract between you (“You”) and STMicroelectronics International N.V. (“ST”), a company incorporated under the laws of the Netherlands acting for the purpose of this Agreement through its Swiss branch 39, Chemin du Champ des Filles, 1228 Plan-les-Ouates, Geneva, Switzerland.

By using the enclosed reference designs, schematics, PC board layouts, and documentation, in hardcopy or CAD tool file format (collectively, the “Reference Material”), You are agreeing to be bound by the terms and conditions of this Agreement. Do not use the Reference Material until You have read and agreed to this Agreement terms and conditions. The use of the Reference Material automatically implies the acceptance of the Agreement terms and conditions.

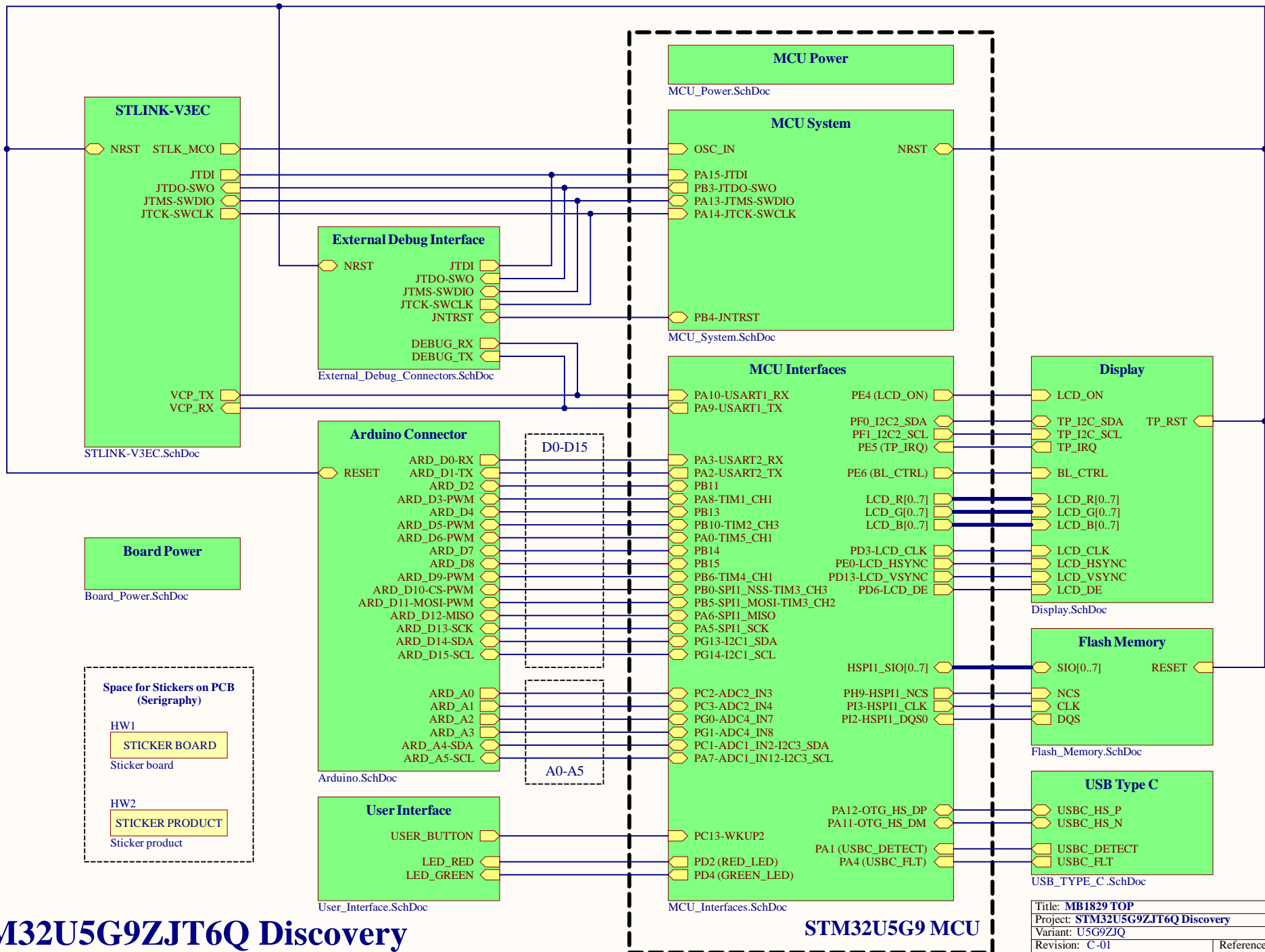
The complete Open Platform License Agreement can be found on [www.st.com/opla](http://www.st.com/opla).

**MB1918 TOP**

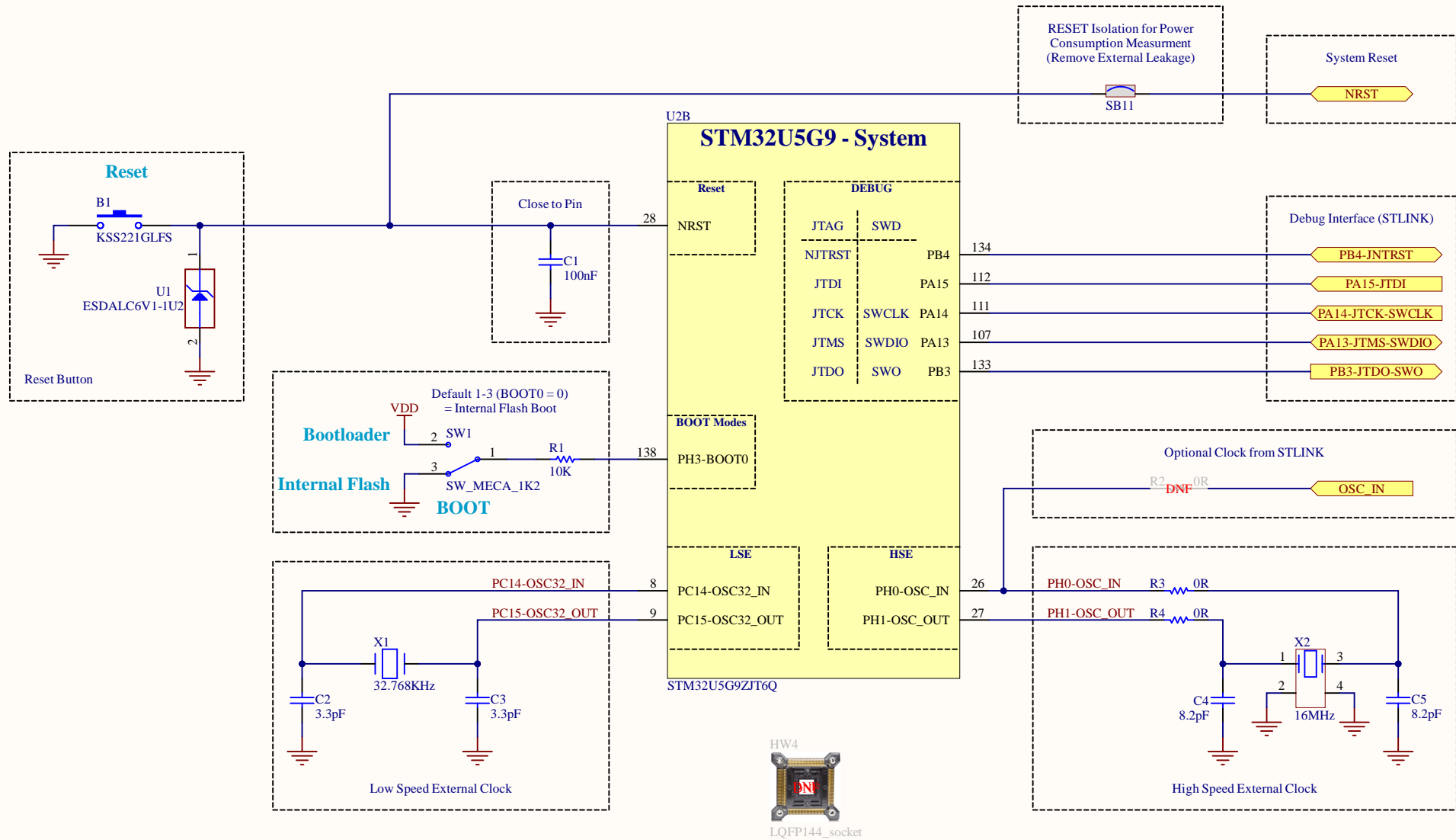
MB1918\_TOP.SchDoc

Title: <b>Project Overview</b>	
Project: <b>STM32U5G9ZJT6Q Discovery</b>	
Variant: <b>U5G9ZJQ</b>	
Revision: <b>C-01</b>	Reference: <b>MB1918</b>
Size: <b>A4</b>	Date: <b>2023-07-05</b>
	Sheet: <b>1</b> of <b>13</b>

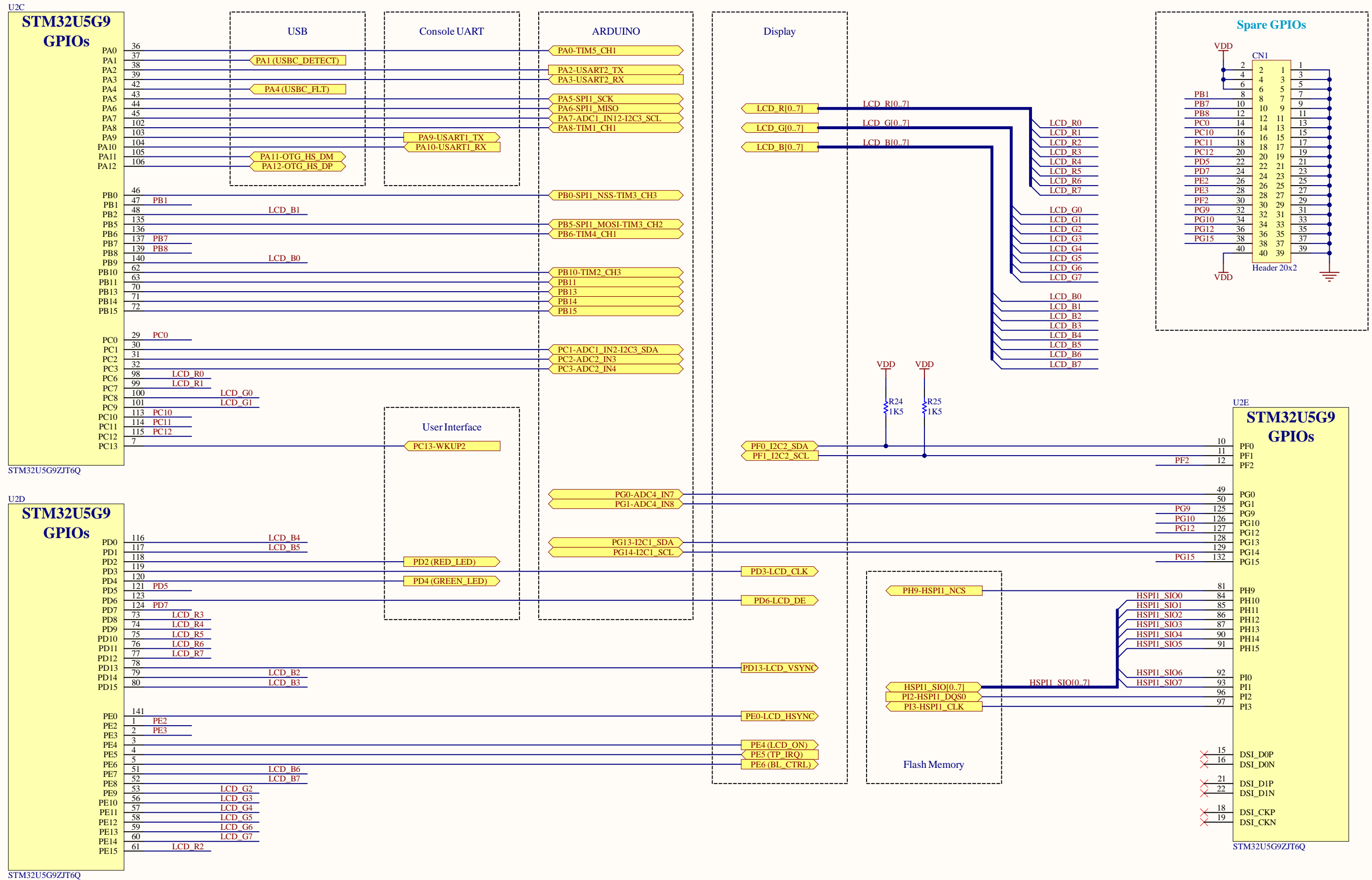




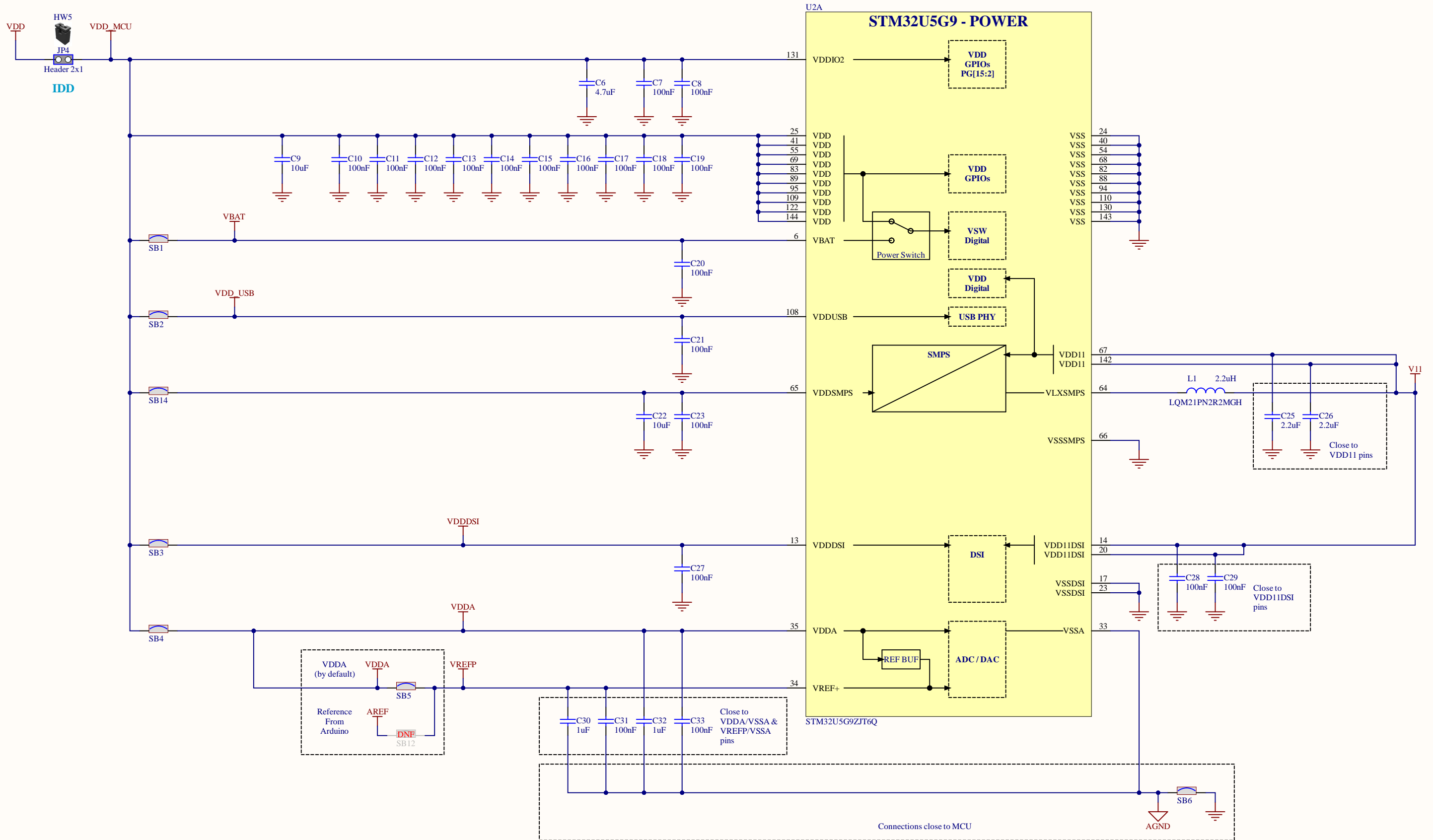
# MCU - System



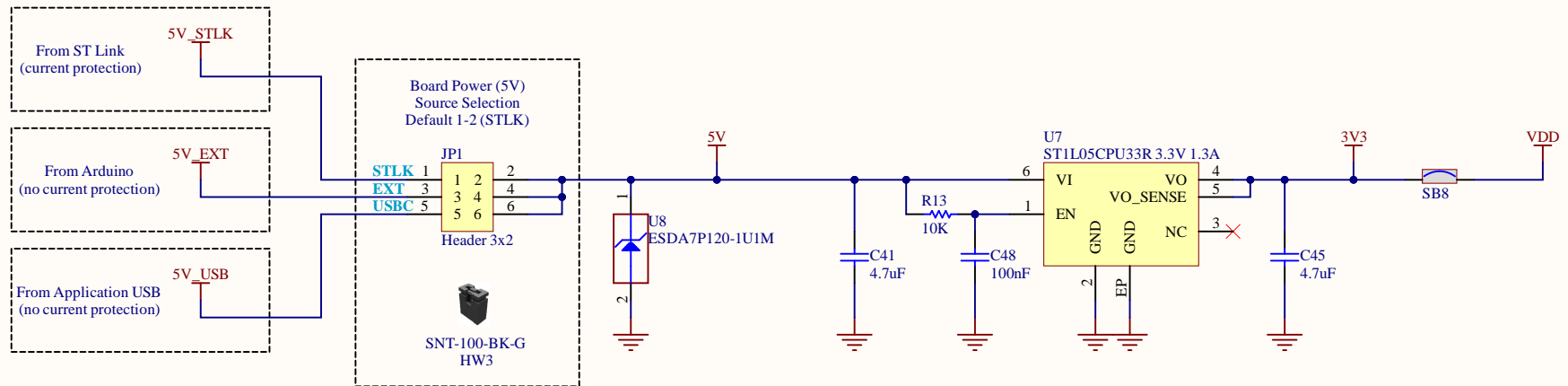
# MCU Interfaces



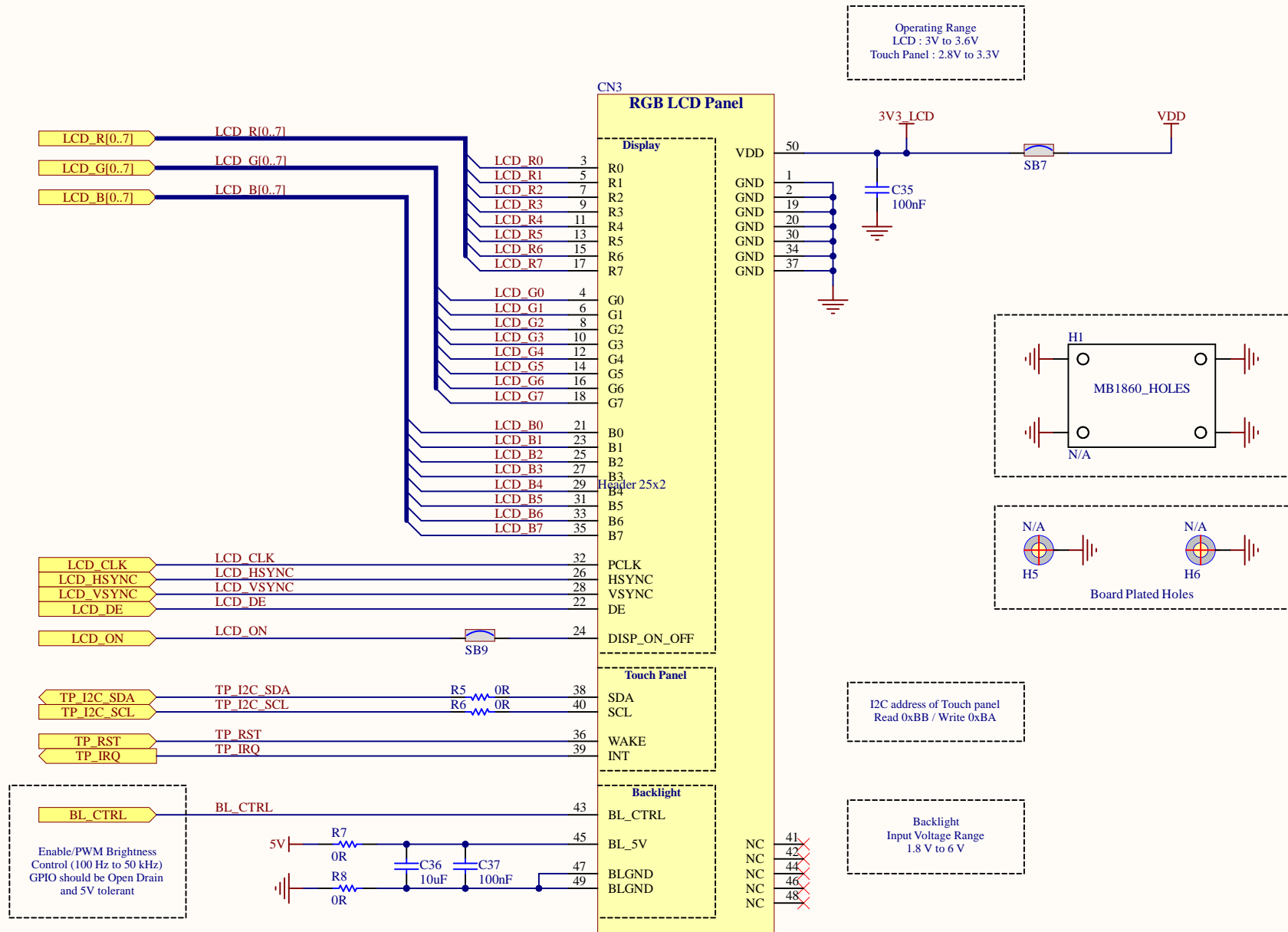
# MCU Power



# Board Power



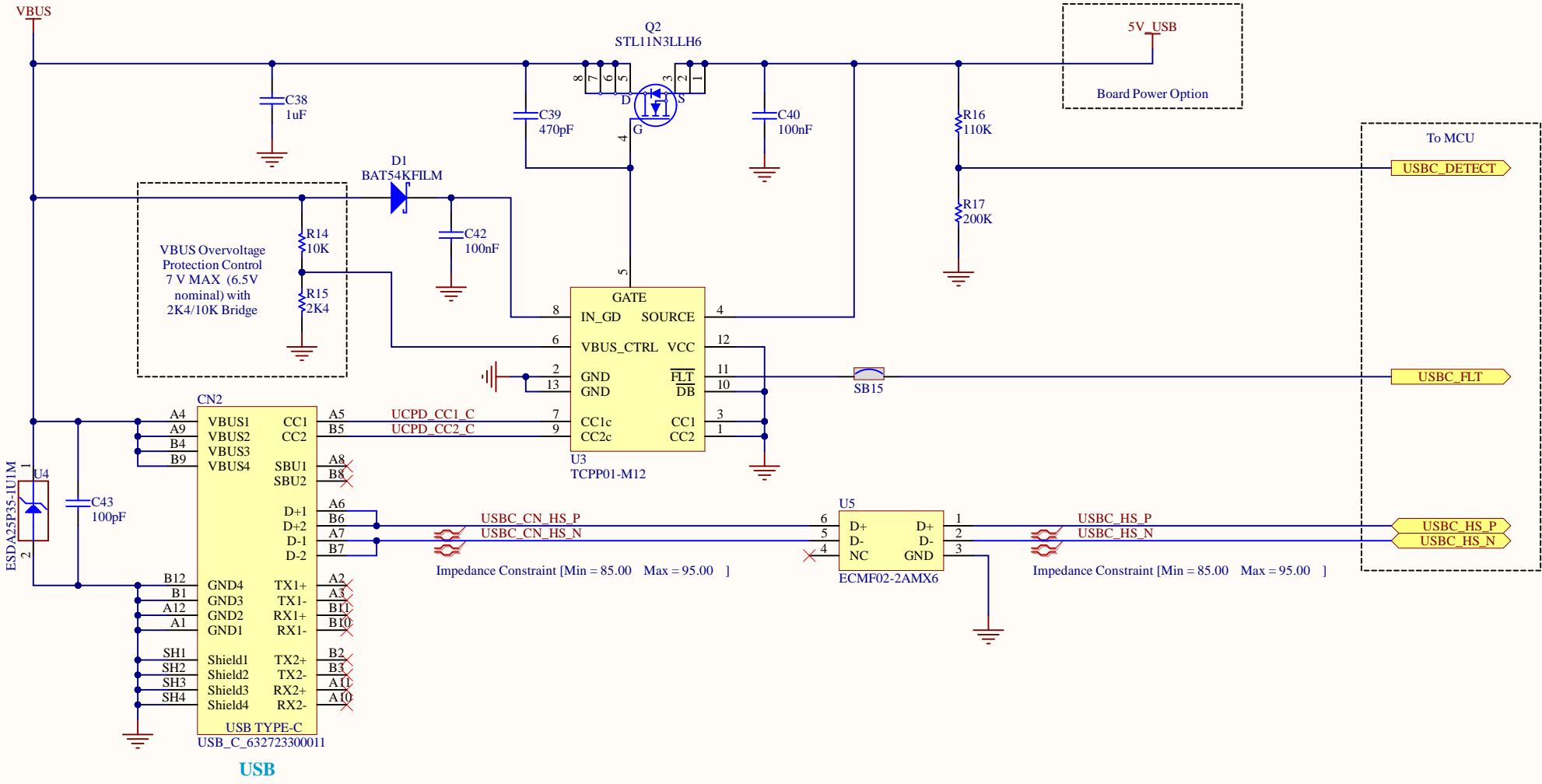
# Display



LCD

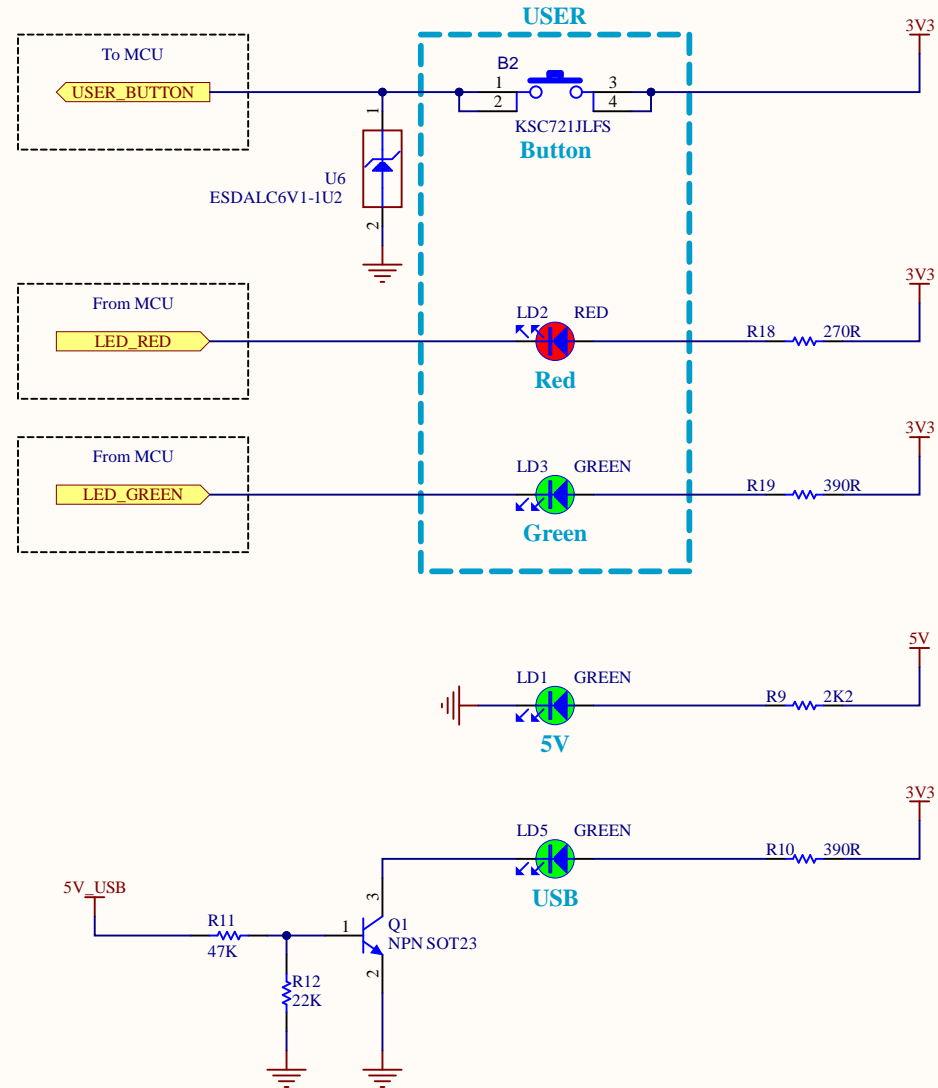


# Application USB (Type C) - Sink Only

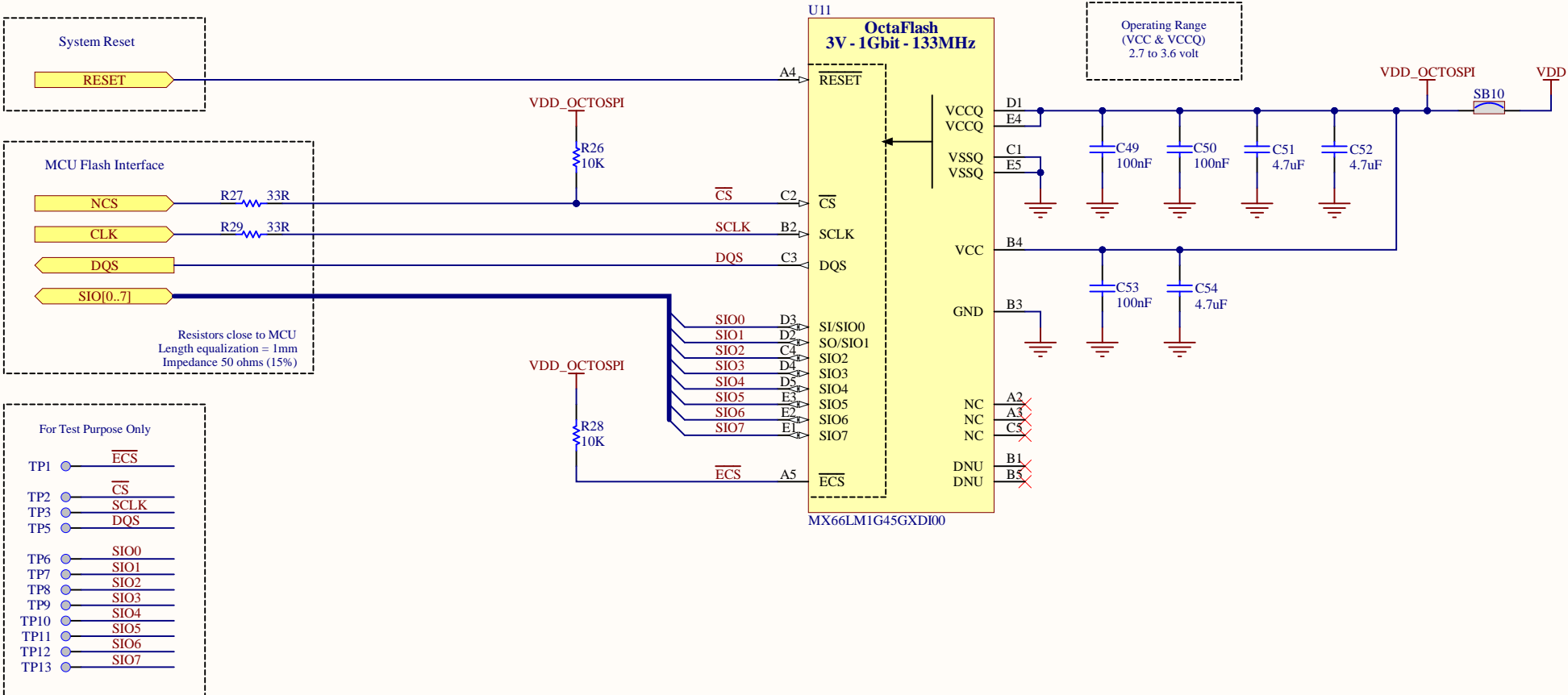




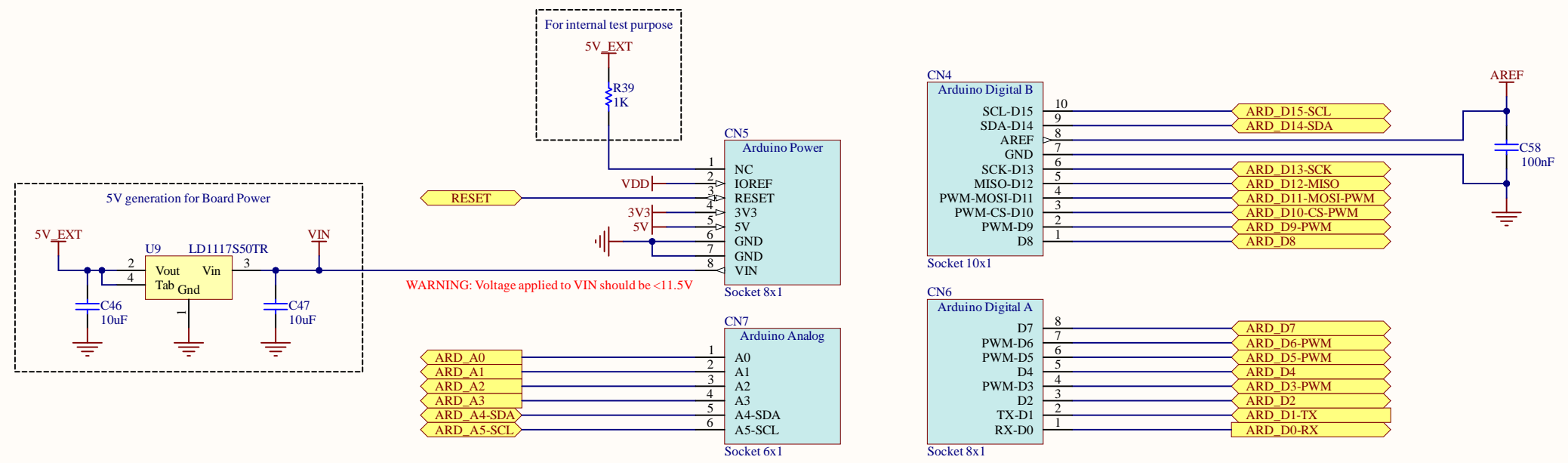
# User Interface



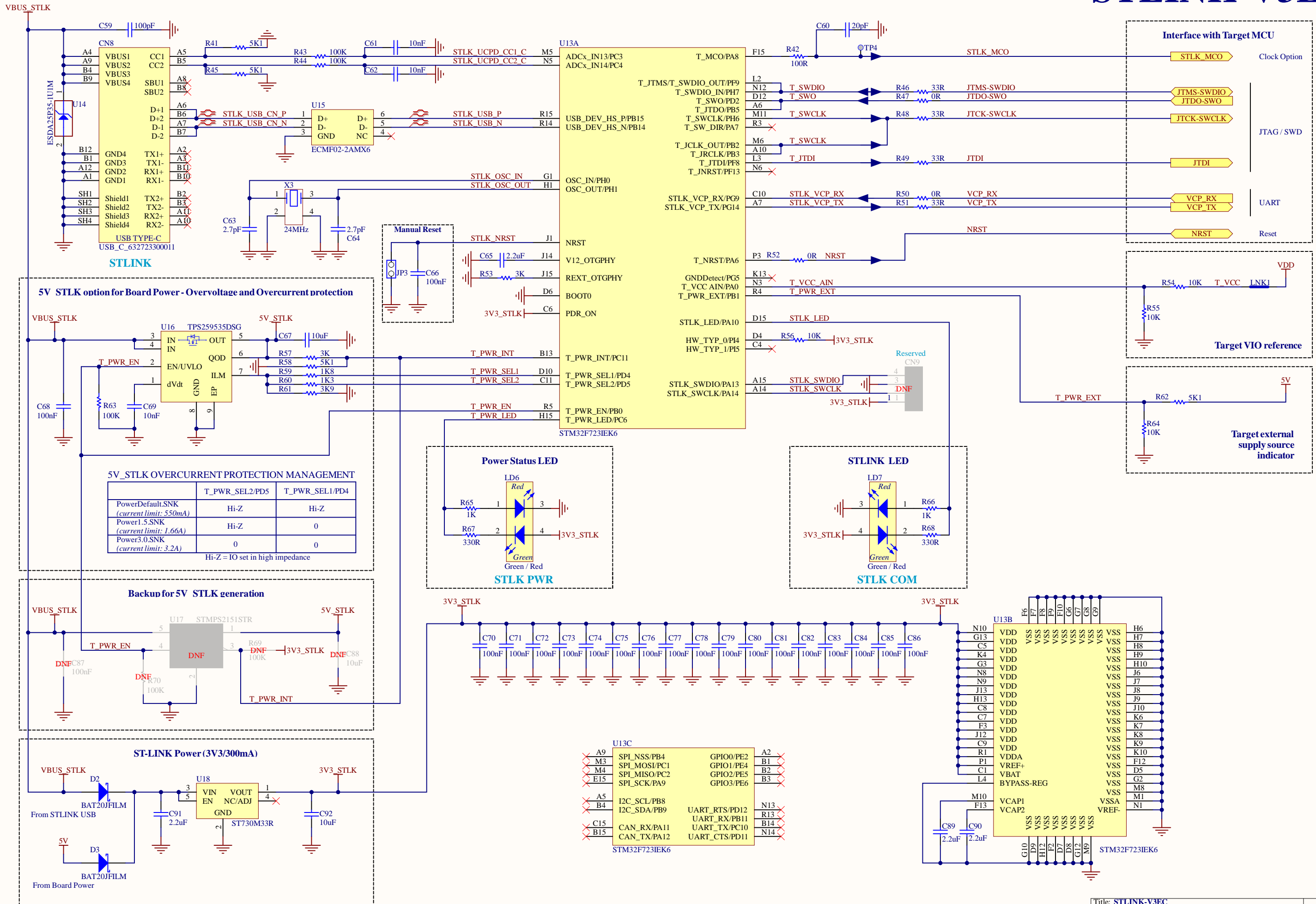
# Octo SPI Flash Memory



# Arduino UNO Rev3 Connectors

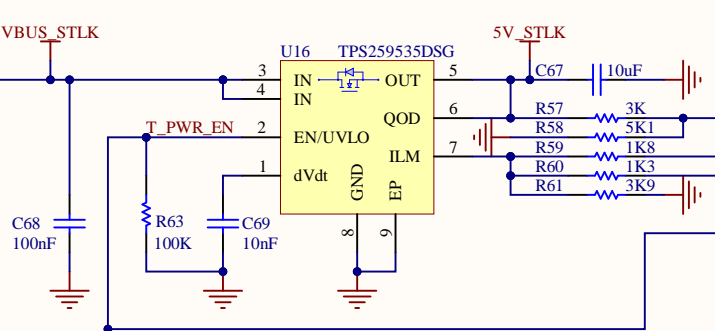


# STLINK-V3EC



STLINK

### 5V\_STLK option for Board Power - Overvoltage and Overcurrent protection

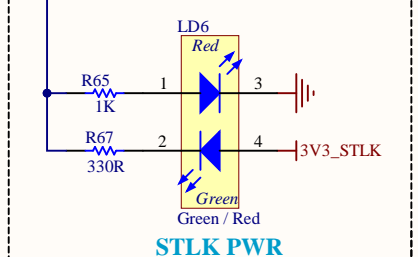


### 5V\_STLK OVERCURRENT PROTECTION MANAGEMENT

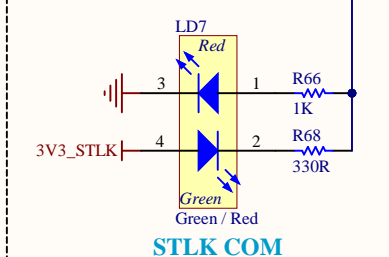
	T_PWR_SEL2/PD5	T_PWR_SEL1/PD4
PowerDefault.SNK (current limit: 550mA)	Hi-Z	Hi-Z
Power1.5.SNK (current limit: 1.66A)	Hi-Z	0
Power3.0.SNK (current limit: 3.2A)	0	0

Hi-Z = IO set in high impedance

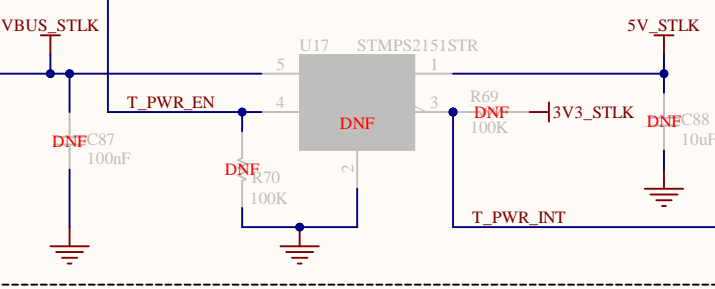
### Power Status LED



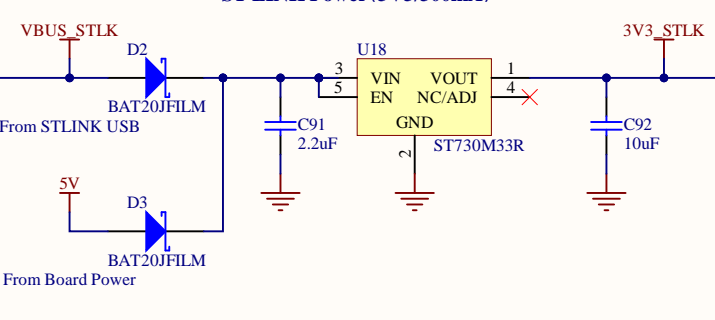
### STLINK LED



### Backup for 5V\_STLK generation



### ST-LINK Power (3V3/300mA)



# External Debug Connectors

