

VL53L3A2 Expansion Board

PCB000669-5.0

PAGE 01 : COVER
PAGE 02 : CONSTRAINTS
PAGE 03 : SENSOR INTERFACE
PAGE 04 : DISPLAY

THE INFORMATION CONTAINED IN THESE SCHEMATIC SHEETS IS
PRELIMINARY AND SUBJECT TO CHANGE WITHOUT NOTICE.
STMicroelectronics BEARS NO RESPONSABILITY FOR ANY
ERRORS IN THESE SCHEMATIC SHEETS.

CONSTRAINTS

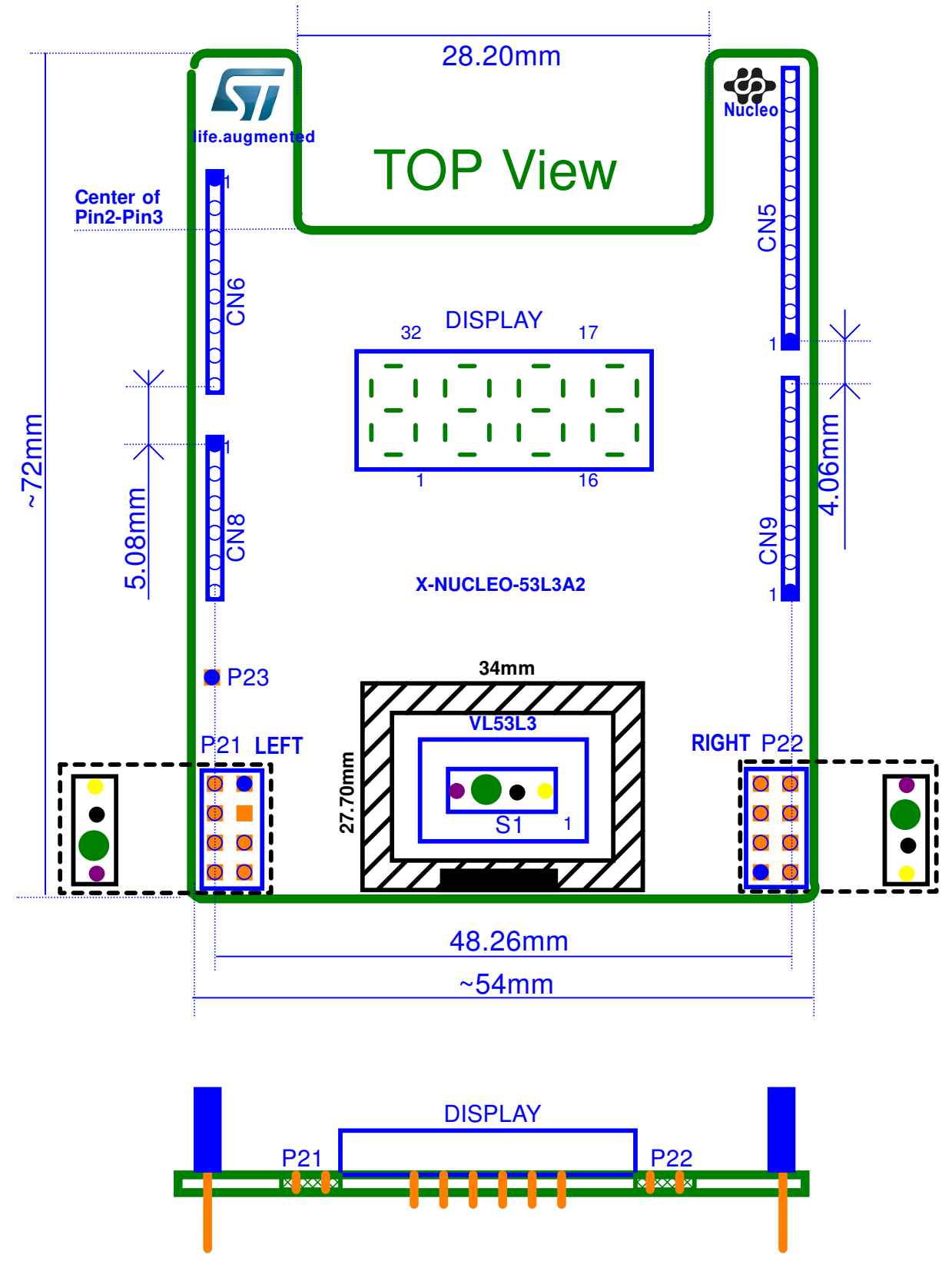
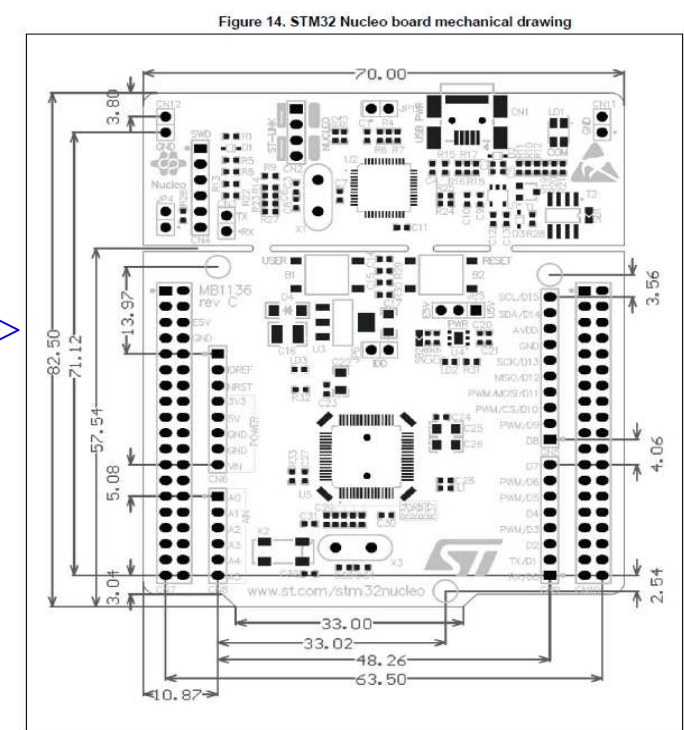
Mechanical Constraints

All components except S1, Display must be on bottom side.
 P21, P22 and P23 are not mounted

The objective is to have a double side PCB to lower the manufacturing cost

The dimensions of the board must match with mechanical characteristics of the STM32 Nucleo mother board

PCB must have ST dark blue painting and white silkscreen marking



ST and Nucleo Logo

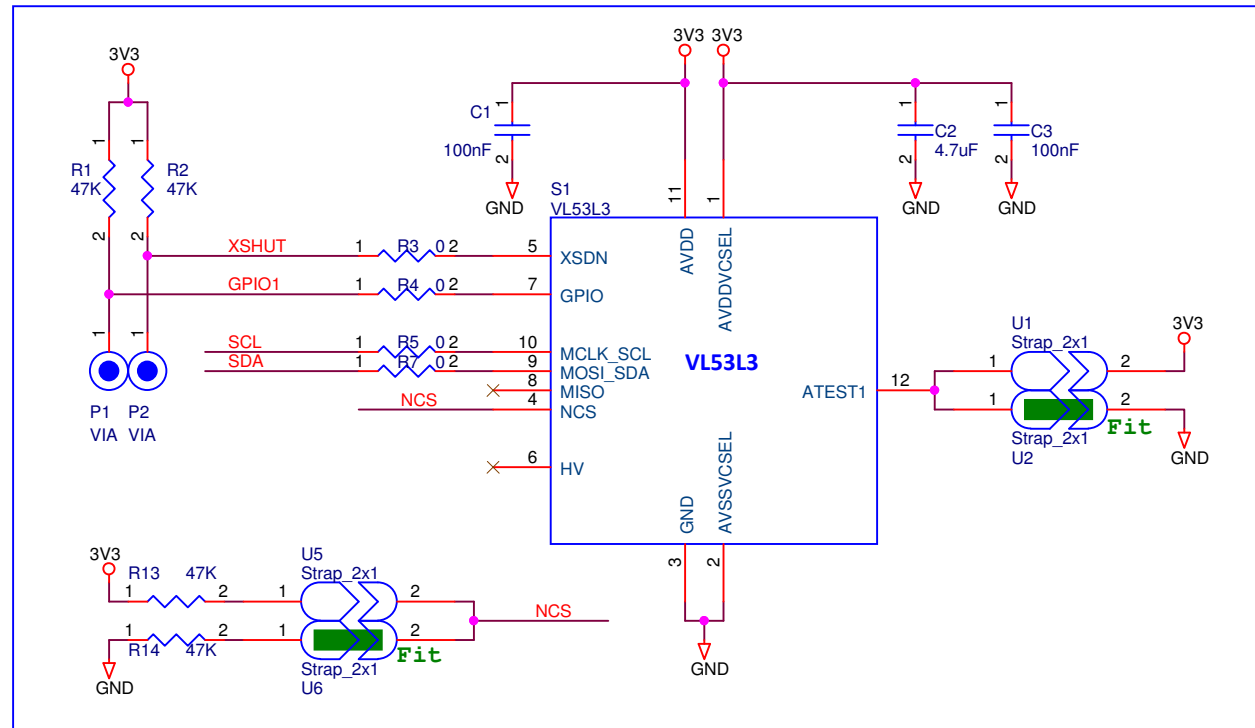
PCB must have ST dark blue painting and the 2 logos must be in white for image and text

CONSTRAINTS

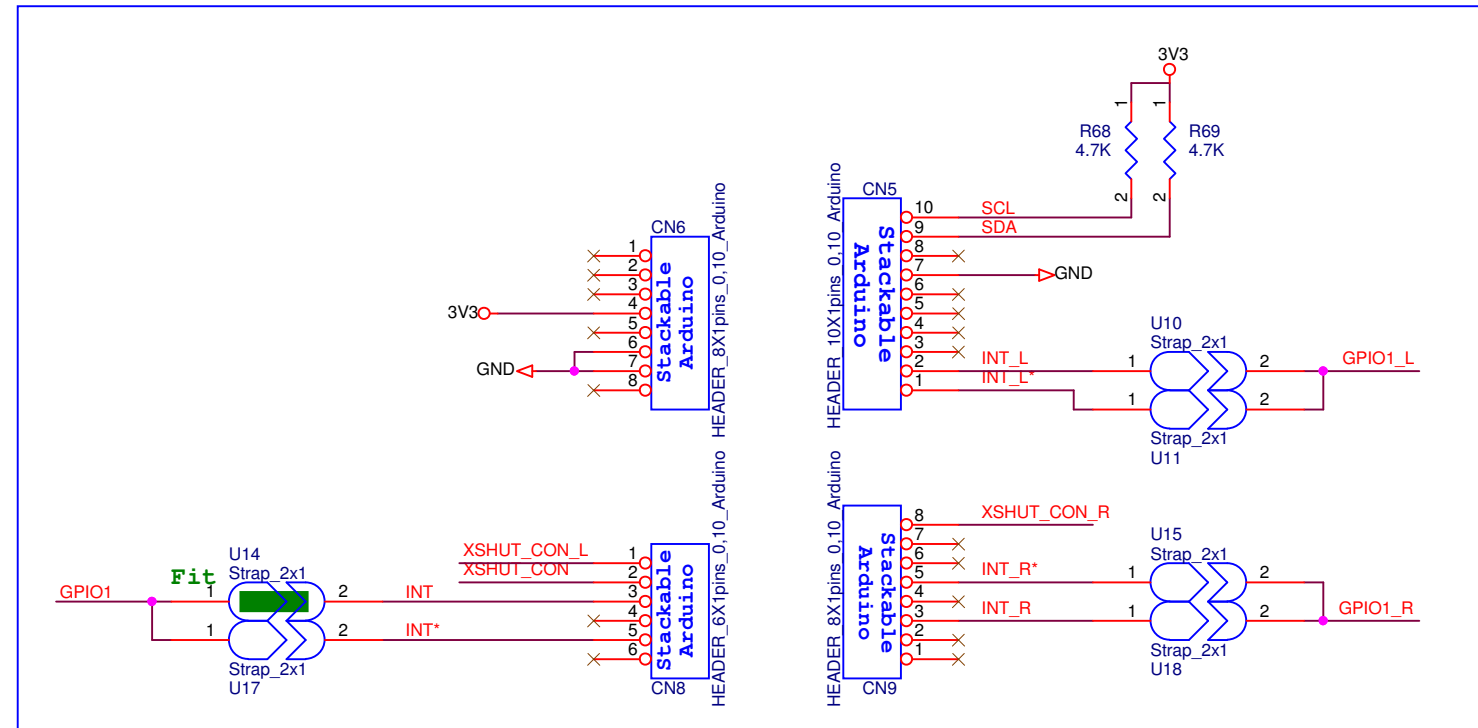
- I2C: same length +/- 3 mm
- SDA/SCL
- Clock: impedance 50 ohms
- SCL

SENSOR INTERFACE

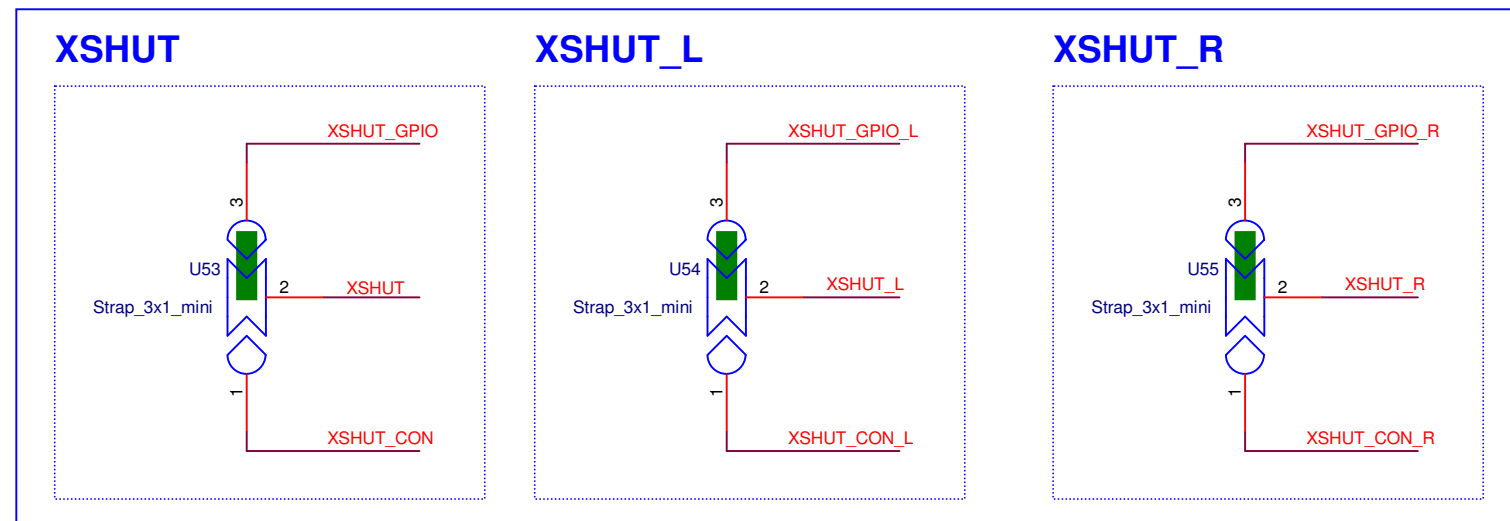
VL53LnX



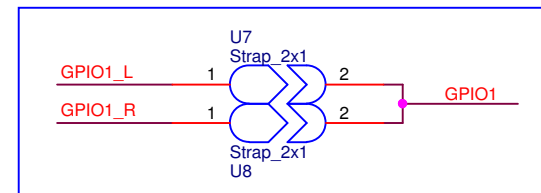
Nucleo_Arduino Connectors



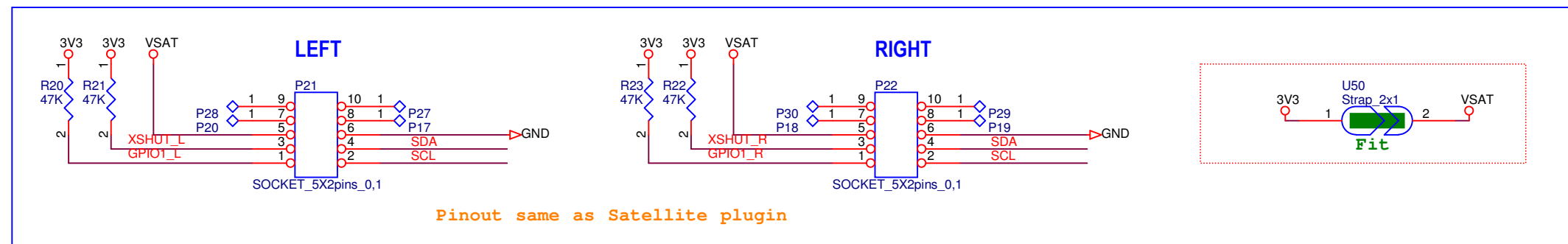
XSHUTDOWN



GPIO



External VL53LnX Connectors

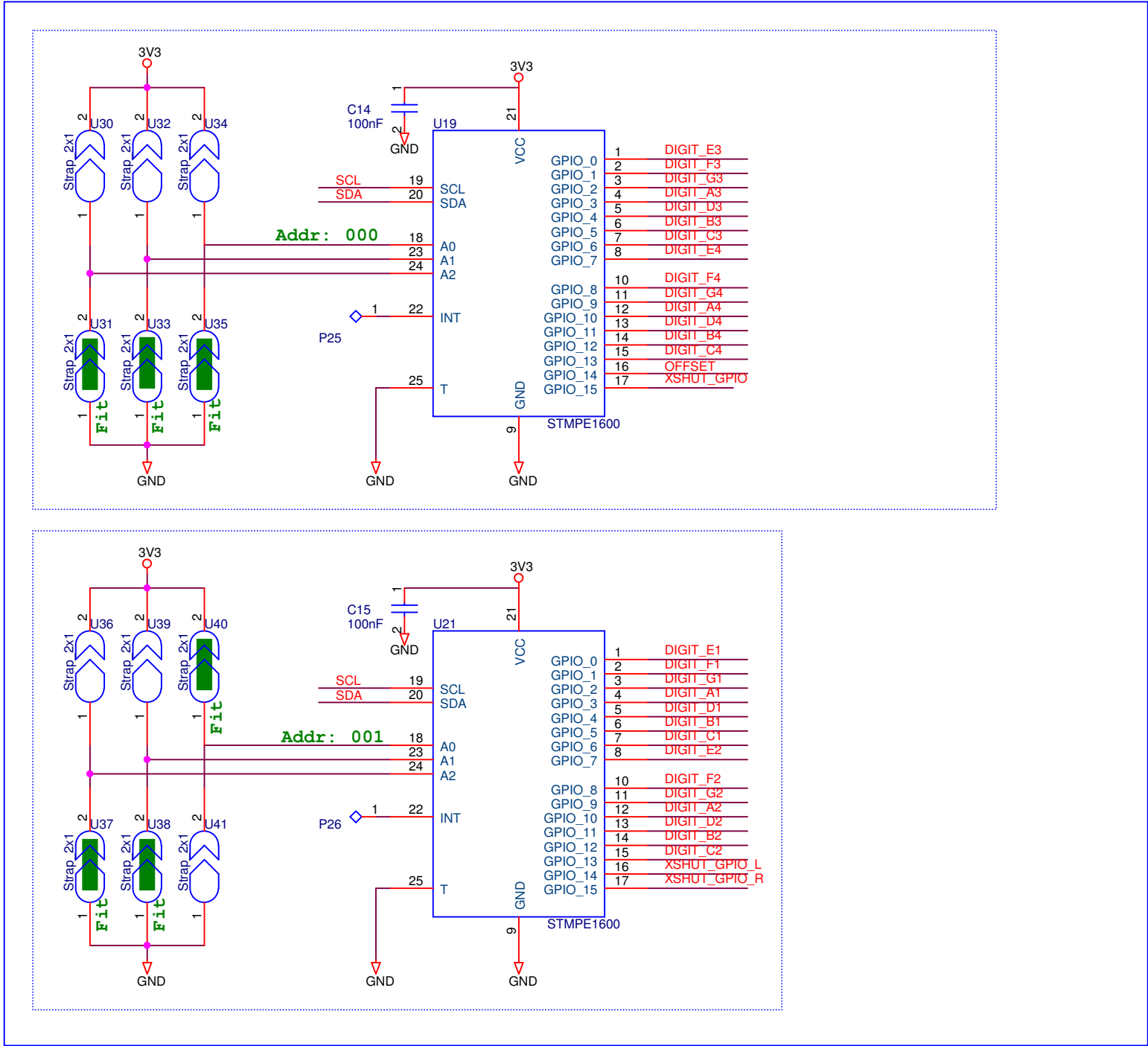


Off Page

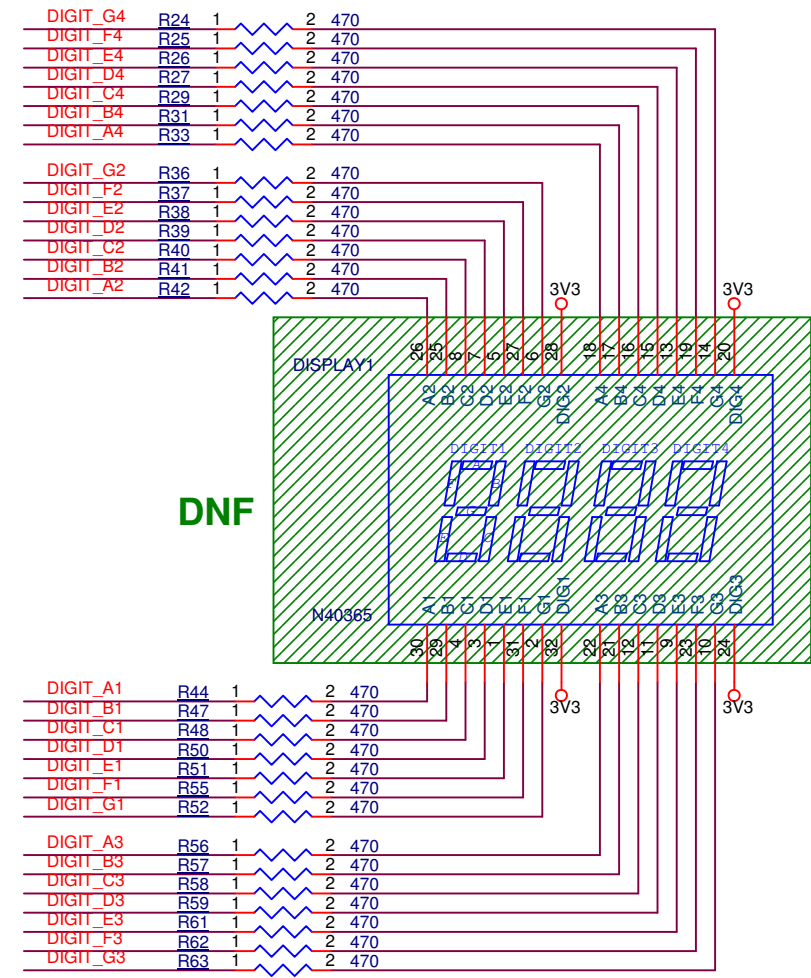
SCL	>>>SCL	4
SDA	>>>SDA	4
XSHUT_GPIO	>>>XSHUT_GPIO	4
XSHUT_GPIO_L	>>>XSHUT_GPIO_L	4
XSHUT_GPIO_R	>>>XSHUT_GPIO_R	4

DISPLAY

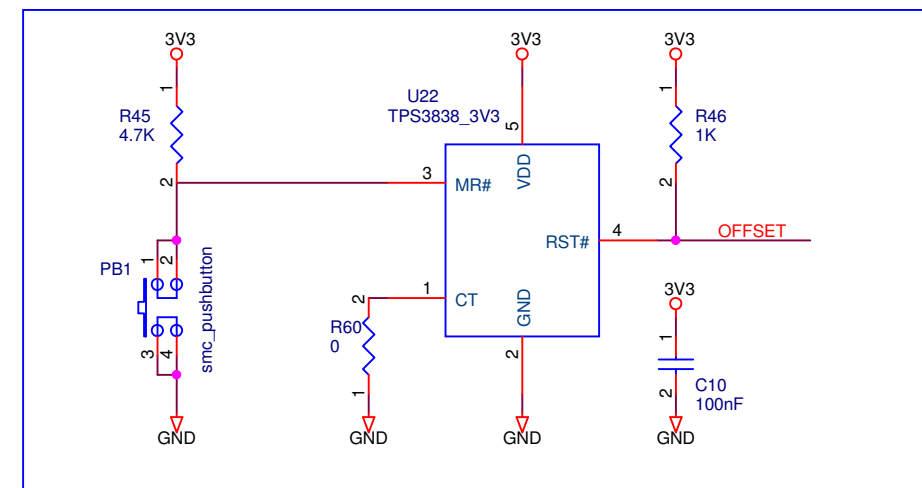
GPIO Expander



Display



BP SHUTDOWN



Off Page

